



WESTMINSTER  
BUSINESS  
SCHOOL

UNIVERSITY OF  
WESTMINSTER

UNIVERSITY OF  
WESTMINSTER

LET'S  
MAKE IT  
HAPPEN

POSTGRADUATE  
PROSPECTUS 2025

309 UNIVERSITY OF WESTMINSTER

# TOGETHER,

**Turn your ambition  
into reality at  
the University of  
Westminster, a global  
university with London  
energy and home to  
endless opportunities.**

# LET'S MAKE IT HAPPEN



**“Become part of our vibrant and supportive community, where you can bring your whole self.”**

# WELCOME TO WESTMINSTER

Welcome to Westminster – a place where discoveries are made, diversity is celebrated, and everyone is welcome.

Established as London’s first polytechnic in 1838, the University of Westminster continues to deliver leading-edge, career-focused education to students from all backgrounds and nearly 160 countries around the world.

Our diverse, international community and unique location in one of the world’s most dynamic, creative and innovative cities means we are a truly global university with London energy.

This outlook, alongside our progressive, compassionate and responsible values, underpins our commitment to help all of our students fulfil their potential and contribute to a more sustainable, equitable and healthier world.

We know that the decision to undertake postgraduate study is not taken lightly. That’s why we ensure that you are fully supported throughout your journey with us – from application to graduation and beyond.

Whether studying full- or part-time, all students have the opportunity to become part of our vibrant and supportive community, where you can bring your whole self and feel you belong.

We offer personalised and authentic education, informed by professional practice – and work

closely with businesses and industry to ensure that you have all the skills you need to forge your career successfully in a rapidly changing world.

During your time with us, and after graduation, you will have access to extensive career development opportunities – including employability skills training, award-winning mentoring programmes, and business and freelance start-up support for aspiring entrepreneurs.

And while helping you to succeed academically and professionally, we offer a comprehensive range of support services, sports facilities and social clubs to help you maintain your wellbeing, build networks and make lasting friendships.

As you can see from our postgraduate prospectus, Westminster students go on to do extraordinary things – thriving professionally and contributing to society, locally and internationally. Whatever your goal or aspiration, we will help you achieve it.

Together, let’s make it happen.

**Professor Peter Bonfield OBE FREng**  
Vice-Chancellor and President

# LONDON, HOME TO OPPORTUNITY AND DISCOVERY

London remains the best city in the world to be a student as ranked by QS Best Cities 2024, attracting people from all over the world to live, work and study. It offers outstanding career opportunities, and rich cultural experiences, with plenty of green spaces.

Visit attractions like Buckingham Palace and the London Eye, explore Shoreditch's quirky character, wander around Camden and Borough Market, and enjoy the views from Hampstead Heath before experiencing the nightlife.

This vibrant and exciting city has been our home since 1838.



## EMPLOYMENT



## CULTURE



## PARKS AND GREEN SPACES

# LONDON, WHERE LEARNING COMES TO LIFE

Thanks to our central London locations you will be fully immersed in the city's culture and business community. Our courses are developed in collaboration with industry and enriched by events, visits, live projects and guest speakers. We work with leading institutions such as Tate Britain and the British Film Institute to give you a vibrant, inspirational learning experience.

**WORLD-LEADING FINANCIAL CENTRE  
AND BUSINESS HUB**

**RICH HERITAGE WITH WORLD-CLASS  
MUSEUMS AND GALLERIES**

**GLOBAL CENTRE FOR ARTS,  
MUSIC AND CREATIVE INDUSTRIES**

**EASY TRAVEL THROUGHOUT  
THE UK AND EUROPE**

# OUR AND CAMPUSES FACILITIES

## REGENT CAMPUS



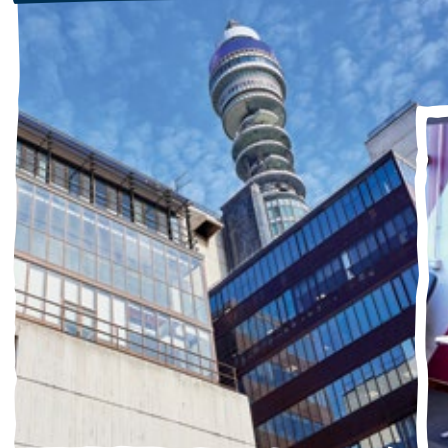
## Little Titchfield Street

## HARROW CAMPUS



Three of our campuses are in the heart of the city and our Harrow Campus in north-west London is only 25 minutes away by Underground (metro) from central London.

## CAVENDISH CAMPUS



- Our innovative learning and lecture spaces include:
- purpose-built art, design, photography, film and TV studios
  - our historic Regent Street Cinema
  - world-class audio recording studios
  - state-of-the-art scientific laboratories
  - dedicated, modern architecture studios
  - a vibrant, fully equipped, 50-seater arts space.

We are also one of the few universities in the UK to have two on-campus Bloomberg Financial Markets Suites and the cutting-edge Fabrication Laboratory that offers a range of 3D printers and laser cutters.

When you are ready to relax there are cafes and coffee shops, gyms, a sports ground and, prayer and quiet rooms. The University of Westminster Students' Union organises everything from club nights to sports, networking and social events for you to get involved, develop new skills and meet friends.

## MARYLEBONE CAMPUS



# A PLACE TO LEARN AND EXPLORE

**Our excellent libraries are home to an extensive collection of books, journals and e-resources, and provide convenient study spaces in the centre of London and at Harrow.**

Our specialist team collaborates with academic staff to create physical and online collections to meet your study and research needs. They also support you to develop research, referencing, academic writing and study skills through one-to-one sessions or group workshops focused on specific topics.

**We also offer:**

- extensive written materials and pre-recorded videos available at any time
- extended opening hours and the option to book spaces for individual or group study
- access to IT software and equipment, including Windows laptops and MacBooks.

The University hosts unique archival collections, including the renowned Westminster Menswear Archive. Our team provides support in using these resources and the many other archives available across the city.

If you require any of our support services, you can visit the Student Centre in Cavendish, Marylebone and Harrow libraries or contact them via live chat.



# WE MADE IT HAPPEN

## Tell us about yourself

As a countryside Japanese girl, I always dreamed of going abroad. After high school, I travelled the world as a backpacker and found children's smiles everywhere - from a small island in the Philippines to villages in Senegal and streets in Cuba. Many children in these areas die from malnutrition, which is predictable, preventable, and treatable. This is why I became a nutritionist and now work for the largest organisation helping children.



## How did your studies prepare you for the work you're now doing at UNICEF?

The course leader at Westminster had a very diverse experience, which was important to me. The multicultural environment allowed me to learn from students worldwide, helping me understand issues in different parts of the world. Westminster introduced me to an alumnus working for Save the Children in Senegal. She advised me to grab every opportunity and not be picky when starting my career. Her advice motivated me to start working for a Cambodian NGO with little salary, then move to Action Against Hunger UK. These experiences made me who I am today.

## Any tips for people navigating the job market as a new graduate?

Follow your dreams and use your talent to make the world better. I will keep working until there are no more malnourished children in the world.

**NATSUKI KAWAI**  
Nationality: Japanese  
Course: Global Public Health Nutrition MSc graduate  
Employer: UNICEF – Nutrition Officer



## Tell us about yourself

I moved to the UK at 16 after winning a scholarship to complete my A levels. Choosing my degree was driven by my desire to make a positive impact on the world. Architecture is the combination of creativity and mathematical thinking, which aligns perfectly with my interests.

## What inspired you to start your own business?

My previous experience, combined with the support from Westminster, inspired me to create Daleva Design, specialising

in biomorphic luxury furniture. My journey began as an exploration and a way to have fun with AI. I started branding my designs and sharing them on social media, where they quickly gained attention, leading to my first client. After producing my first sofa, I am now focusing on growing Daleva Design.

## What resources or support from the University did you find most valuable in launching your business?

The WeNetwork community and the StartUp101 programme were particularly valuable.

WeNetwork provided a collaborative environment where I could connect with like-minded individuals and experienced mentors, who inspired innovation and offered continuous support. The StartUp101 programme equipped me with crucial entrepreneurial skills such as business planning, marketing strategy and financial management.

Both programmes provided financial support that was crucial in the early stages of my business and helped me launch my website and establish an online presence. The combination of educational resources, mentorship and financial assistance from the University of Westminster played a key role in transforming my entrepreneurial aspirations into a business.

**RADA DALEVA**  
Nationality: Bulgarian  
Course: Architecture MA graduate  
Business founder: Daleva Design  
Website: [dalevadesign.com](http://dalevadesign.com)





# TURNING AMBITION INTO REALITY

**Our Careers and Employability Service is committed to providing the resources, tools and support you need to effectively manage your career. Thanks to our close links to industry and professional organisations in London, the UK and globally, we provide many opportunities to connect with employers and develop new skills.**

#### **Finding a job**

Our Careers Consultants offer one-to-one appointments to help you achieve your career goals, guiding you to understand your personal skills and experiences and how they relate to the job market. You can receive interview coaching and get feedback on CVs and applications. You can also access face-to-face and online networking opportunities, careers fairs and industry-specific events. Our exceptional careers support and guidance is available during your studies and for three years post-graduation.

#### **Work experience and placements**

We support you to find work experience and volunteering opportunities to increase your professional experience and enhance your employment prospects.

#### **Practical careers support**

Join our award-winning Future Ready Mentoring programme to meet with an industry professional, who can share insights and broaden your network. And the Westminster Employability Award motivates you to develop your CV and interpersonal skills to stand out in the job market. Plus, you will have access to networking events with employers and professional bodies.

And, if you wish to work while studying, our Service can assist in finding part-time job opportunities that fit around your studies. Our Talent Bank provides opportunities for Westminster students to apply for part-time jobs within the University too.

**“The Westminster Employability Award pushed me beyond my comfort zone. I attended careers fairs, networking events and the WEA Pitch Yourself activity, where I honed my presentation and video interviewing skills.”**

**MAYA BASCOMBE**  
Software Engineering MEng

# SUPPORTING YOU TO SUCCEED

We celebrate the energy and creativity of our diverse student body. Whether you are from overseas or a returning student, the Student Centre and your personal tutor will support you at every step.

## CAREERS AND EMPLOYMENT

Our Careers and Employability Service supports you throughout your studies and for up to three years after graduation. They offer career development advice and help finding volunteering and job opportunities. You can also join an active mentoring programme to connect with a professional aligned to your career goals.



## LEARNING SUPPORT

We help enhance your academic skills including essay and report writing, referencing and research through practical courses and tutorials, available both online and in person.



## DISABILITY SUPPORT

If you have a disability or condition that may affect your studies, our specialist advisers can provide advice on building access, specialist technology and adjustments for coursework, assessments and exams.

## WELLBEING AND HEALTH SERVICES



Our experienced counsellors and advisers are available to support your physical, mental and emotional health and wellbeing. They provide confidential support to help manage a wide range of issues and facilitate access to external services.

## ACCOMMODATION



Our team assists with finding university accommodation and offers advice on private housing, including help with tenancy agreements and dealing with landlords. We recommend you apply earlier. Please visit the website for information: [westminster.ac.uk/accommodation](https://westminster.ac.uk/accommodation)

**“Thank goodness for the support assistant in the research methods labs to help build my confidence with my quantitative skills. I got a distinction for the module in the end!”**

**ANJALEE CHAKRAVARTY-AGBO**  
Health Psychology MSc



## WESTMINSTER ENTERPRISE NETWORK

Join our vibrant community of aspiring founders, freelancers and individuals eager to develop their enterprise skills: access funding opportunities, networking events and masterclasses. Our graduates often become freelancers, start their own businesses or innovate within organisations. Unlock your potential with WeNetwork and create your own path to success.



## WESTMINSTER ALUMNI COMMUNITY

Once you graduate, you will belong to a thriving alumni network, with members across nearly 160 countries, where you can continue to build friendships and connections. You will enjoy benefits, such as careers support for up to three years, discounts on further studies, and invitations to networking and social events. And we will encourage you to share your experience with future students.

# THRIVING ON A BUDGET

A postgraduate degree is an investment in your future, often leading to around a 12 per cent higher salary compared to those with an undergraduate degree\*. Beyond financial reward, you will gain a global professional network, lasting friendships and the skills to achieve more than you had ever thought possible.

## Funding your degree

Before applying, you need to plan how you are going to support yourself financially during your studies.

## Postgraduate Master's loan

Student Finance England (SFE) offers loans to Master's students, which can be used towards tuition fees or maintenance costs. For more information visit: [gov.uk/funding-for-postgraduate-study](https://www.gov.uk/funding-for-postgraduate-study)

## Scholarships

We offer scholarships for UK and international students. PhD scholarship details are available at [westminster.ac.uk/graduate-school](https://www.westminster.ac.uk/graduate-school). In most cases you need to apply for the scholarship before the start of the course.

For more information on fees and funding, visit: [westminster.ac.uk/fees-and-funding](https://www.westminster.ac.uk/fees-and-funding) and [westminster.ac.uk/scholarships](https://www.westminster.ac.uk/scholarships)

## Alumni tuition fee discount

Former students remain part of our global community and enjoy continued benefits and exclusive services, including a 20 per cent discount on the tuition fee for a Master's course

and reduced tuition fees for certain professional development courses. For more information visit: [westminster.ac.uk/alumni-benefits](https://www.westminster.ac.uk/alumni-benefits)

## Managing your budget

Before you arrive, start to research your expected costs, attend our events and use the resources we provide to help plan your budget. Money-saving tips and student discounts can be found on various websites.

Our Careers and Employability Service will help you find part-time work to supplement your income while you study. In addition, we offer all students financial advice and support, including a number of bursaries.

We are working to keep costs as low as possible:

- free breakfast options and affordable lunches
- free clubs and societies
- free gyms and sports facilities.

Also, consider asking your employer for support or look at what funding is available from charities and trusts.

\*Source: Graduate Labour Market Statistics 2023



# LET'S MAKE IT HAPPEN

## Tell us about yourself

Originally from Essex, I moved to London 8 years ago for my undergraduate studies and have stayed ever since, enchanted by the city. I chose to study a Master's in Human Resource Management because I had begun working in the recruitment department at the John Lewis Partnership. Now, as a Talent Acquisition Consultant, I advocate for inclusive workplaces.

I chose Westminster for its flexible part-time study options, which catered for students with outside commitments. The course included Saturday workshops on specific skills such as performance management and negotiating to equip students with the necessary practical skills to help them to excel in their chosen

career. It also added a more interactive and engaging learning experience, which was much appreciated.

## What support services did you use, and how did they contribute to your academic success?

Within the first few months at the University, I booked a couple of skills support sessions with the library team. These included workshops on literature reviews, structuring essays and one-to-one sessions where you had the opportunity to present draft assignments. These sessions significantly improved my confidence in tackling postgraduate-level writing. As a result, I produced assignments that got consistently high grades. I am very grateful for these academic support services in helping me at the beginning of my studies.

## What's your advice for students wanting to study a Master's degree?

Trust in yourself and the knowledge you already have, and just go for it!

### **TOBY JONES**

**Nationality:** British  
**Course:** Human Resources Management MA graduate  
**Employer:** John Lewis Partnership, a leading British retailer



## Tell us about yourself

I'm from Kabul, where my passion for urban design and spatial planning started. It grew more once I started working as an architect and urban designer. I have always been passionate about the built environment and its relationship with human beings.

## Can you talk us through your process of securing a scholarship?

There are many partially and fully funded scholarships available both from universities and the UK government. The key to writing a cover letter that stands out is to be genuine and write it yourself to really stand out; sharing your personal story and showing passion for your field.

I applied for many scholarships over two years and got rejected each time. I learnt from my mistakes and perfected my application until I finally secured one of the most reputable scholarships in the UK, the Chevening Scholarship, which only accepts 2% of applicants.

## How has securing the scholarship helped you as a student?

With the financial burden lifted, I was able to concentrate on my studies, spend more time with my friends, and participate in extracurricular activities without having to worry about living expenses or working part-time.

## Any tips for students wanting to apply for funding?

Start early. Do your research and apply for funding months before the start date of your programme.

Secondly, customise each application to the funding opportunity and get help from university advisers, mentors or those in your network with experience in this area. Stay persistent. It will be worth it in the end.

### **MARYAM KHURRAM**

**Nationality:** Afghan  
**Course:** International Planning and Sustainable Development MA



# WORKING WITH OUR BUSINESS COMMUNITY

The University of Westminster has strong ties to London's business community which provide our students with opportunities to work with organisations that shape the city.

Our close relationships with employers and leading businesses ensure that our courses give you the skills and experience employers need. Many of our courses are professionally accredited. Our courses feature industry guest speakers, visits to organisations both in the UK and abroad and the chance to respond to live briefs set by businesses. You will also have opportunities to build a lasting professional network to enhance your career prospects through our mentoring programme and engagement with our global alumni community.

If you are interested in working freelance or starting a business, we invite you to join the Westminster Enterprise Network (WeNetwork), a vibrant, engaged community of colleagues, students and recent graduates, who can help nurture your passion for entrepreneurship.

Our academics collaborate with businesses to deliver cutting-edge research and innovation projects to drive businesses forward.

Visit [westminster.ac.uk/business-services/student-testimonials](https://westminster.ac.uk/business-services/student-testimonials) to read about our students' experiences of working with our local business community.

## Professional development

As an accredited CPD provider, we collaborate with organisations to deliver customised training programmes and short courses to help staff keep learning and developing their skills beyond their formal education.

Visit [westminster.ac.uk/workforce-development](https://westminster.ac.uk/workforce-development) for details.



## Zone29

Step through into our exciting new development at 29 Marylebone Road.

A working powerhouse of new thinking, new opportunities and new outcomes, this inclusive and sustainable space will enable students and industry to connect and co-create like never before - bringing fresh new thinking to the world of work. This multi-million pound, refurbished nine-storey building is set to open in late 2025.

ZONE 29

**MAKING A DIFFERENCE TOGETHER**

- Student and graduate talent
- Facilities and space
- Research and innovation expertise
- Training and development opportunities

UNIVERSITY OF WESTMINSTER

# GLOBAL UNIVERSITY, LONDON ENERGY

Welcome to our vibrant, diverse community in the heart of London. Each year, students from over 160 countries come to study for a career-focused degree and enjoy London's exciting cultural and social life. And, as a graduate, you will belong to a worldwide network of over 180,000 alumni.

## Support for international students

We offer lots of support to help you make the most of your experience, succeed in your studies and feel at home.

This includes:

- pre-departure and offer holder events to help you prepare to come to the UK
- assistance with finding a University residence or alternative accommodation
- information about enrolment and student support services
- welcome sessions and social events for international students with a chance to meet staff and other international students
- student societies representing diverse nationalities and interests
- specialist career support, including careers fairs, work placements, volunteering and mentoring opportunities.

We also offer courses in study skills and academic English, along with pre-sessional English courses to improve your language skills before you arrive. To find out more, visit: [westminster.ac.uk/international/english-language-support](https://westminster.ac.uk/international/english-language-support)

## Scholarships and discounts

We offer an extensive range of postgraduate scholarships for home and international students, and, if you are an alumni, you may be entitled to a 20 per cent discount on the tuition fee for a Master's course. See the website [westminster.ac.uk/study/fees-and-funding](https://westminster.ac.uk/study/fees-and-funding) and page 61 for details.

## Pre-Master's courses

We partner with Kaplan International Pathways to provide preparatory courses for students who still need to meet the entry requirements. The options available are Pre-Master's for Business, Law and Social Sciences or Science and Engineering. These courses are taught at the Kaplan International College at London Bridge and will enhance your academic skills and subject knowledge, and raise your English to the required level for postgraduate study. Successful completion guarantees a place on your chosen postgraduate degree.

To find out more and apply, visit [kaplanpathways.com/universities/university-of-westminster](https://kaplanpathways.com/universities/university-of-westminster) and for information on alternative Pre-Master's qualifications, visit: [westminster.ac.uk/international/university-preparation-courses](https://westminster.ac.uk/international/university-preparation-courses)

## Semester Postgraduate Study Abroad Programme

This programme allows students to gain international experience while studying in their home country. The credits you earn for the modules or internship completed at Westminster are transferred to your home degree.

For more information, visit: [westminster.ac.uk/study-abroad](https://westminster.ac.uk/study-abroad)

To hear from our current international students visit our blog at [westminster.ac.uk/international](https://westminster.ac.uk/international) or follow our social channels.



We are in the top 10 for International Students in the UK according to the Times Higher Education Young University Rankings 2024.



# RESEARCH WITH IMPACT

Building on our pioneering past, colleagues and students come together in our research and knowledge exchange endeavours to find solutions to make a difference for our communities and for the world.

We engage with government, businesses, the public and local communities, disseminating and applying knowledge through collaborating with partners both nationally and internationally.

Our four university-wide research communities focus on building knowledge and sparking change in some of the most important areas of human activity. These communities are:

- Arts, Communication and Culture
- Diversity and Inclusion
- Health Innovation and Wellbeing
- Sustainable Cities and the Urban Environment

Our innovative research is recognised as world-leading, both inside and outside academia - 72 per cent of our research has been deemed to be world-leading (4\*) or internationally excellent (3\*) according to the 2021 Research Excellence Framework (REF).

## Together with business

Our researchers and Calico Life Sciences LLC, an American biotechnology company, are collaborating on a deep learning pipeline to analyse over 38,000 MRI scans from the UK Biobank. Their findings reveal that MRI organ measurements correlate with genetic and environmental factors, linking health traits to risk factors and disease outcomes. This research has identified many new genetic associations.



# THE GRADUATE SCHOOL

As a doctoral researcher at Westminster, you will belong to an academic school and research group. But you will also be a member of a much wider community of researchers through our Graduate School - a vibrant, high-quality, inspiring and globally engaged research environment.

Developing the next generation of researchers is a key priority for the University, and our Graduate School is vital to this aim. The School is a thriving home for our doctoral researchers and provides a stimulating Doctoral Researcher Development Programme benchmarked to national and international standards.

Through the Graduate School, you can become highly regarded in your field of expertise, both nationally and internationally, and enhance your future professional life and career development.

We will support your development into a confident, highly skilled and well-rounded researcher through:

- a series of tailor-made workshops and specialist skills sessions - the Doctoral Researcher Development Programme
- developing connections with subject-leading research experts and dedicated professional service support staff.

Our students have an excellent experience. Overall satisfaction was 83 per cent in the most recent Postgraduate Research Experience Survey (PRES) 2023, demonstrating our commitment to helping you succeed in your doctoral research.

For more information, visit: [westminster.ac.uk/research-degrees](https://westminster.ac.uk/research-degrees)



Ranked in the top 20 UK universities in the 2023 Postgraduate Research Experience Survey.

# A WELCOMING AND SUPPORTIVE COMMUNITY

Whatever your goal, you will find a warm welcome and all the support you need to grow academically and professionally.

## Tell us about yourself

I pursued my postgraduate degree in Creative Writing because I love to write. I draw inspiration from everyday moments, even simple conversations I've overheard while commuting on a bus.

## What factors influenced your decision in choosing the University of Westminster?

Being in London, a city where I've always wanted to study. When I searched for universities in London, Westminster was the only one offering 'Writing the City', which was exactly what I wanted. Additionally, the University is ranked 2nd in England for international students, making it an easy decision.

## What types of student support services have you used during your time as a student?

I've used the Careers and Employability Service at Westminster, which offers guidance on careers and job search. They helped with CV writing and interview preparation. Additionally,

I've received great academic support from my lecturers. I arrived late to start my postgraduate degree but my lecturer met with me personally to explain everything I had missed, making me feel supported and accepted.

## What else happened to make you feel part of the University community?

Meeting with one of the regional managers for sub-Saharan African students was a memorable experience. She guided me before I arrived and encouraged me to join the student ambassador scheme. As an ambassador, I represent the University at open days and conferences and chat with prospective students on the Unibuddy platform. These activities have given me a strong sense of belonging to the University and I also earn some money while doing it.

**SYLVIA AMPONSAH**  
Nationality: Ghanian  
Course: Creative Writing MA graduate



## Tell us about yourself

I chose to pursue my degree in Cyber Security and Forensics MSc because I've always been fascinated by technology and its impact on society. My passion lies in digital security and investigating cybercrimes, which has motivated me to explore ways to protect individuals and organisations from online threats.

## What's your favourite thing about studying at the University of Westminster?

Its vibrant and diverse student community; interacting with peers from various backgrounds encouraging a deeper understanding of different cultures. Additionally, the University's central London location offers access to the heart of the city, making it convenient to explore career opportunities. It's important to embrace the city's fast-paced lifestyle and diverse culture. The city offers an incredible number of events, internships and experiences that can complement your studies and shape your overall development.

## What's your favourite thing about studying in London?

From visiting historical museums and attending theatre performances to exploring diverse restaurants and participating in festivals, there's always something exciting happening in the city.

## Any tips for budgeting as a student?

Living in London can be expensive, but there are several strategies I use to manage expenses effectively. Firstly, I take advantage of student discounts offered by various retailers, restaurants and entertainment venues. I also use student discounts for travel which makes commuting much more affordable. Cooking meals at home rather than eating out frequently helps save money on food expenses.

**ABDUL KARIM**  
Nationality: Pakistani  
Course: Cyber Security and Forensics MSc graduate



# EDUCATION THAT WORKS FOR YOU

Our high-quality teaching is informed by internationally recognised research and strong industry links. We aim to transform students of all backgrounds into resilient, knowledgeable graduates, who are adaptable, ambitious and ready to make a positive impact on the global future.

We focus on teaching practical skills and addressing real-world issues, while also emphasising critical thinking and job readiness.

Many courses are accredited or recognised by leading professional bodies. Students are offered personalised and flexible ways of learning and digital skills are integrated throughout our courses.

By collaborating with students, employers and the community, we strive to make education inclusive and accessible, breaking down barriers to success.

## Find a course structure that meets your needs:

### Full-time study

Courses start in September or January. Expect to attend university for lectures or seminars at least two days a week during the academic year (31 weeks). Each course is assessed differently but is likely to include coursework and an extended project or dissertation.

### Part-time study

Daytime or evening classes are available in most subjects. A part-time degree typically takes at least two years, attending two sessions each week of the academic year plus six to twelve hours personal study each week.

Some employers may support you to study by day release. Please note that part-time study is not available for students requiring a student visa.

### With professional experience

Some courses include an integrated work placement or internship in the UK or abroad. These full-time degrees are completed over two years.

### Postgraduate certificate and postgraduate diploma

Our Master's degree courses are based on completing credit-bearing modules. You can transfer credits to other courses or institutions.

We also offer LLM, MBA and MArch degrees. With an apprenticeship you can study for a postgraduate qualification while working. Please visit the website for details.

### Professional development and short courses

As an accredited CPD training provider, we deliver short, specialist courses in areas such as project management, data analytics and digital marketing strategy.

Visit [westminster.ac.uk/workforce-development](https://www.westminster.ac.uk/workforce-development) for details.



# OUR SUBJECT AREAS

The following section lists the courses we offer. Most courses are available full-time (FT) and some are available part-time (PT). For the most up-to-date information on the course structure, course modules, fees and entry requirements, visit: [westminster.ac.uk/course-search](http://westminster.ac.uk/course-search)

Accounting and Finance.....	34	Fashion.....	47
Architecture, Interiors and Urban Design.....	35	Film and Television.....	49
Art, Design and Visual Culture.....	37	Languages.....	50
Biological and Biomedical Sciences.....	39	Law.....	51
Business and Management.....	40	Marketing.....	52
Computer Science and Engineering.....	41	Media and Communication.....	53
Construction, Surveying and Real Estate.....	42	Music.....	54
Criminology.....	43	Nutrition and Public Health.....	55
Data Science and Informatics.....	44	Politics and International Relations.....	56
Economics.....	45	Psychology.....	57
English and Creative Writing.....	46	Tourism and Events Management.....	58
		Transport and Logistics.....	59

Bloomberg  
EXPERTISE  
BEYOND  
EXPECTATION



## ACCOUNTING AND FINANCE

The global financial services industry is rapidly advancing through technology and digital transformation. To keep pace with these changes, our innovative and challenging courses are developed in close collaboration with employers and professional bodies. Working with industry-leading organisations such as the CFA Institute, the Chartered Institute for Securities & Investment (CISI) and the Association of Chartered Certified Accountants (ACCA) helps us provide the distinctive skill set you need to meet the demands of tomorrow's job market. The University is a CFA University Affiliation Program Partner. Westminster Business School is recognised as a CISI Centre of Excellence.

Our courses are designed to enhance the value of a Master's academic qualification with professional skills. They draw on the teaching excellence and research expertise of our academic and professionally qualified staff. Additionally, we continue to invest in financial technology resources in our two state-of-the-art Bloomberg Financial Market Suites, giving you the chance to experience technology and data widely adopted by leading global investment banks in the world's major financial centres.

The skills and knowledge gained on our courses will open up a range of opportunities in different accounting and finance careers. These include management and financial accounting and reporting, auditing, stockbroking, private equity, finance and tax consultancy, FinTech, and investment and risk management.

Recent graduates have found employment at organisations including Amazon, Deloitte, Citibank, the Financial Conduct Authority, PricewaterhouseCoopers, Santander, Société Générale and the World Economic Forum.

**Campus for all courses:**  
Marylebone

**Finance and Accounting MSc**  
Duration: 1 year FT

**Start:** September and January  
This course is accredited by the Association of Chartered Certified Accountants (ACCA) and the Chartered Institute of Management Accountants. On completion of the course you may be exempt from multiple exam papers.

**Finance (International Finance) MSc**

Duration: 1 year FT  
**Start:** September

**FinTech with Business Analytics MSc**

Duration: 1 year FT  
**Start:** September and January

**Investment and Risk Finance MSc**

Duration: 1 year FT  
**Start:** September and January  
This course is recognised by the Chartered Institute for Securities & Investment and CFA Institute University Affiliation Program.

**"The highly professional academic staff have been instrumental in creating a stimulating learning environment, providing valuable mentorship and expertise."**

**GLEON KOCI**  
Finance and Accounting MSc

Professional bodies accrediting or recognising our courses include:



# ARCHITECTURE, INTERIORS AND URBAN DESIGN

Westminster is one of the largest providers of architecture, interiors and urban design education in the country. We offer specialist, experimental postgraduate education grounded in continually extending theoretical and technical knowledge. And we provide you with the chance to develop your ideas through creative and reflective approaches to your chosen discipline.

Our 110-metre-long, galleried, daylit architecture studios are situated on the upper levels of the Marylebone Campus, and provide a vibrant and innovative studio culture. And our Westminster Fabrication Laboratory combines the digital with the analogue to create some of the finest facilities of any school of architecture in central London.

Our strong links with leading professionals and future employers mean there are exciting networking opportunities and excellent employment prospects for our students. Recent graduates have found success within interior design, architectural design, the public sector and the construction industries.

**Campus for all courses:**  
Marylebone

**Architecture MA**  
Duration: 1 year FT / 2 years PT  
Start: September

**Architecture and Environmental Design MSc**  
Duration: 1 year FT / 2 years PT  
Start: September

**Architecture and Environmental Design Postgraduate Certificate**  
Duration: 1 year PT  
Start: September

**Architecture & Sustainable Heritage MA**  
Duration: 1 year FT / 2 years PT  
Start: September

**Architecture Postgraduate Diploma Professional Practice (RIBA pt III)**  
Duration: 1 year PT  
Start: September

**Energy and Environmental Design Postgraduate Certificate**  
Duration: 1 year PT  
Start: September

**Interior Architecture MA**  
Duration: 1 year FT / 2 years PT  
Start: September

**International Planning and Sustainable Development MA (with pathways)**  
Duration: 1 year FT / 2 years PT  
Start: September  
Both course pathways have full RTPI accreditation as a 'Combined Planning Programme'.

*This course is available as a postgraduate diploma. See page 31 for details.*

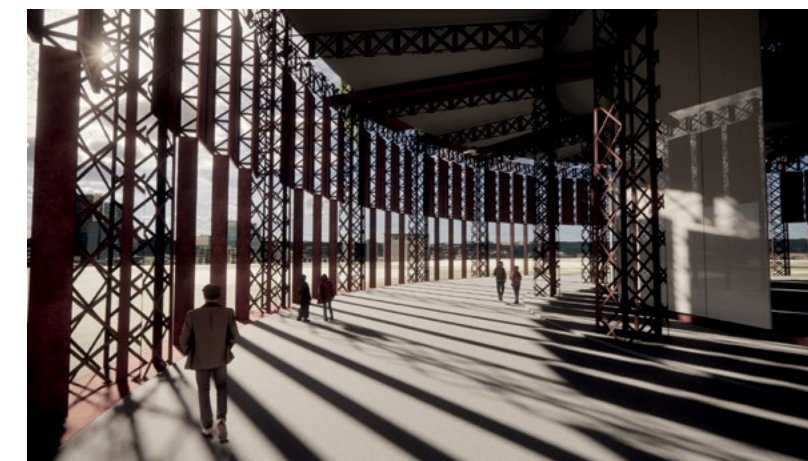
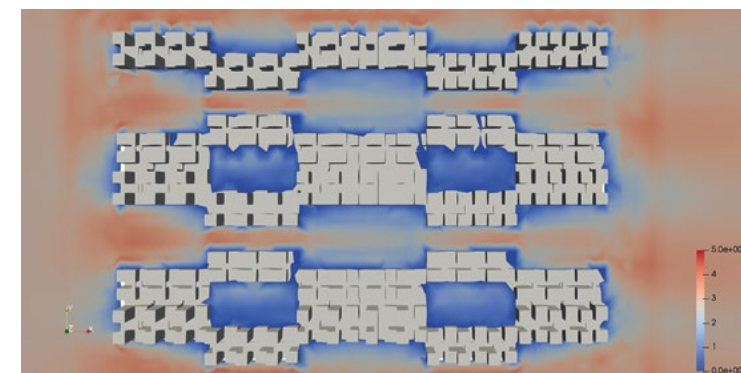
**Master of Architecture (MArch) (RIBA pt II)**  
Duration: 2 years FT  
Start: September  
The course is prescribed by the Architects Registration Board (ARB) and validated by the Royal Institute of British Architects (RIBA), providing exemption from the RIBA Part II examination.

**Urban Design MA**  
Duration: 1 year FT / 2 years PT  
Start: September  
This course is accredited by the RTPI as a Specialist Course.

**Urban Design Postgraduate Certificate**  
Duration: 1 year PT  
Start: September

**Urban Design Postgraduate Diploma**  
Duration: 1 year FT / 2 years PT  
Start: September

**Urban and Regional Planning MA**  
Duration: 1 year FT / 2 years PT  
Start: September  
This course is accredited by the RTPI as a 'Combined Degree Programme'. Students may join as student members and upon graduation become licentiates. Apprenticeship route available.



Student work clockwise from top-left: Jinglei Wang, Amritha Thomas, Ploykan Tanataveetram, Shada Elmagri, Yu Sun

Professional bodies accrediting or recognising our courses include:





# ART, DESIGN AND VISUAL CULTURE

Our postgraduate art and design portfolio offers a unique combination of professional practice, creative development, skills enhancement and contextual, specialist and interdisciplinary knowledge.

Our courses have always reflected and influenced the state of the art - right back to 1839. The world's first photography degree was delivered at our predecessor, the Regent Street Polytechnic.

We work with leading professionals and organisations to cultivate new talent and foster original, innovative thinking. You will be exposed to a rich mix of visiting speakers from across the creative sector and be able to draw upon the skills and expertise of lecturers, other students and links to London's vibrant creative community.

Our graduates go on to a wide range of careers as artists, photographers, curators, designers, academics, writers, digital advertising executives, creative technologists, digital content producers and developers, game designers, new media producers and marketers, app developers and entrepreneurs.

## Art and Emerging Technologies MA

Duration: 1 Year FT / 2 Years PT  
Start: September  
Campus: Harrow

## Art and Visual Culture MA

Duration: 1 year FT / 2 years PT  
Start: September and January  
Campus: Regent

## Cultural and Critical Studies MA

Duration: 1 year FT / 2 years PT  
Start: September and January  
Campus: Regent

## Expanded Photography MA

Duration: 1 Year FT / 2 Years PT  
Start: September  
Campus: Harrow

## Global Contemporary Art MA

Duration: 1 Year FT / 2 Years PT  
Start: September  
Campus: Harrow

## Interactive Media Practice MA

Duration: 1 year FT / 2 years PT  
Start: September  
Campus: Harrow

## Museums, Galleries and Contemporary Culture MA

Duration: 1 year FT / 2 years PT  
Start: September and January  
Campus: Regent

*Modules on this course have been designed in partnership with museums and galleries including The Photographers' Gallery and Museum of London.*

## Museums, Galleries and Contemporary Culture with Professional Experience MA

Duration: 2 years FT  
Start: September  
Campus: Regent  
*Modules on this course have been designed in partnership with museums and galleries including The Photographers' Gallery and Museum of London.*





# BIOLOGICAL AND BIOMEDICAL SCIENCES

At Westminster you will hone your practical and professional skills interacting with our academics who enjoy an international reputation for professional and research activities. With courses informed by our research and in collaboration with national and international institutions, you have the chance to experience the excitement of these fields first-hand, including opportunities to visit world leading flagship laboratories with state-of-the-art facilities.

We are proud of our contribution in biomedical sciences and have an active research culture. Our researchers are finding ways to help tackle cancer, liver disease, obesity, diabetes, and neurodegenerative and inflammatory diseases. Our biotechnology research is internationally admired, aiming to exploit biological resources for the development of bio-products and their use for environmental, medical and chemical/biochemical applications.

We are committed to teaching and researching topics at the forefront of industry developments, from the growing relationship between Artificial Intelligence and healthcare, to key issues at the forefront of the pharmaceutical science industry.

Graduates have gone on to a variety of careers including research or industry. Some graduates undertake PhD programmes or enter careers in research and development or commercial areas such as technical roles or sales in life science and healthcare companies. Those already working in research or healthcare laboratories have gained additional or translational skills, enhancing their current roles.

**Campus for all courses:**  
Cavendish

**Applied Biotechnology MSc**  
Duration: 1 year FT  
Start: September

**Artificial Intelligence and Digital Health MSc**  
Duration: 1 year FT / 2 years PT  
Start: September

**Biomedical Sciences MSc**  
Duration: 1 year FT / 2 years PT  
Start: September

*The course is accredited by the Institute of Biomedical Science.*

**Pharmaceutical Science MSc**  
Duration: 1 year FT / 2 years PT  
Start: September

Professional bodies accrediting or recognising our courses include:



For full and most up-to-date information, see our website: [westminster.ac.uk/biological-and-biomedical-sciences](http://westminster.ac.uk/biological-and-biomedical-sciences)



# BUSINESS AND MANAGEMENT

Our graduates develop the relevant skills and mindset to respond proactively, creatively and responsibly to challenges in today's rapidly changing international business environment. Our innovative management programmes cover operational and strategic aspects, combining rigorous academic study with practical, evidence-based skills.

Each programme has been carefully designed to produce creative, skilled and enterprising professionals with the expertise and confidence to build rewarding careers, while having a real impact where they work. You might want to develop your entrepreneurial skills, explore the latest project management techniques, analyse the environmental issues facing companies or manage organisational change. Whatever your business interest, we can support you.

Our team combines strong specialist business experience with the academic qualifications to teach all aspects of applied management, leadership and its associated specialist disciplines.

Our business courses will prepare you to become business leaders and entrepreneurs, or seek employment in SMEs and blue-chip companies in the public, private or third sector.

For Marketing courses see page 52.

**We develop graduates with the skills and mindset to respond creatively and responsibly to a changing world.**

For full and most up-to-date information, see our website: [westminster.ac.uk/business-and-management](http://westminster.ac.uk/business-and-management)

**Campus for all courses:**  
Marylebone

**Business and Organisational Psychology MSc**  
Duration: 1 year FT / 2 years PT  
Start: September and January  
*This course is accredited by the Association for Business Psychology.*

**Digital Business MSc**  
Duration: 1 year FT  
Start: September and January

**Entrepreneurship, Innovation and Enterprise Development MSc**  
Duration: 1 year FT  
Start: September and January

**Human Resource Management MA**  
Duration: 1 year FT / 2 years PT  
Start: September and January  
*This course is accredited by the Chartered Institute of Personnel and Development.*

**International Business and Management MSc**  
Duration: 1 year FT  
Start: September and January

**International Development Management MSc**  
Duration: 1 year FT  
Start: September and January

Professional bodies accrediting or recognising our courses include:



**International Human Resource Management MA**  
Duration: 1 year FT  
Start: September and January  
*This course is accredited by the Chartered Institute of Personnel and Development.*

**Management MA**  
Duration: 1 year FT  
Start: September and January

**Master of Business Administration (MBA)**  
Duration: 1 year FT  
Start: September and January

**Project Management MSc**  
Duration: 1 year FT  
Start: September and January  
*This course is accredited by the Association of Project Management (APM) and the PMI Global Accreditation Center for Project Management Education Programs (GAC).*

**Sustainability Management and Innovation MSc**  
Duration: 1 year FT  
Start: September and January  
*This course is recognised by the Carbon Trust.*



# COMPUTER SCIENCE AND ENGINEERING

Our specialist postgraduate courses prepare you for the fast-moving, cutting-edge computer science and engineering industries.

The need for improved cyber security has never been greater as we increasingly rely upon computers for all aspects of our daily life. Our Cyber Security and Forensics course is informed by links to industry and supported by active in-house research. You can choose to specialise in cyber security or digital forensics and gain an understanding of the nature of the security threats that face computer systems, the type of information that is stored on digital devices and how it can be extracted. Graduates often secure employment as senior information security officers, in roles related to cybersecurity, or in more technical capacities, where they investigate threats and protect digital assets.

Our Software Engineering (Conversion) course aims to provide non-computing graduates with the core, leading-edge practical knowledge and skills that a professional software engineer requires to be successful in today's IT industry. This course provides you with essential practical experience of programming and applying software engineering to a number of new and important areas of IT and computing, including mobile computing. It also helps you develop a strong grasp of the theory that underpins these practical skills.

For Data Science and Informatics courses see page 44.

**Campus for all courses:**  
Cavendish

## Cyber Security and Forensics MSc

**Duration:** 1 year FT / 2 years PT  
**Start:** September and January

*This course is accredited by BCS, The Chartered Institute for IT for the purposes of partially meeting the academic requirement for registration as a Chartered IT Professional and partially meeting the academic requirement for a Chartered Engineer.*

*This programme is also fully certified by the National Cyber Security Centre (NCSC), which is a sign of national excellence. Students will receive a certificate upon graduation. The NCSC is part of the UK Government's national communications intelligence agency GCHQ.*

Professional bodies accrediting or recognising our courses include:



## Software Engineering (Conversion) MSc

**Duration:** 1 year FT / 2 years PT  
**Start:** September and January



# CONSTRUCTION, SURVEYING AND REAL ESTATE

Our professionally accredited real estate and construction portfolio provides you with the skills to succeed in a workplace focused on the technological and managerial processes associated with the development, post-construction, appraisal and management of buildings.

We have excellent connections with our accrediting professional bodies and the industry. All our courses are professionally accredited by the Royal Institution of Chartered Surveyors (RICS) and/or Chartered Institute of Building (CIOB). Highly regarded by students and employers, both within the UK and internationally, our courses are informed by the latest developments in practice and research.

Our graduates have excellent career prospects. Alumni have gone on to senior roles in a range of real estate and consultancy businesses and financial institutions. Recent graduates have found employment at CBRE, Mace, Barratt Developments, Savills, Carter Jonas and Grainger.

**Campus for all courses:**  
Marylebone

## Construction Project Management MSc

**Duration:** 1 year FT  
**Start:** September and January  
*This course is accredited by the Royal Institution of Chartered Surveyors and the Chartered Institute of Building. Apprenticeship route available.*

## Real Estate Development MSc

**Duration:** 1 year FT  
**Start:** September and January  
*This course is accredited by the Royal Institution of Chartered Surveyors. Apprenticeship route available.*

**"The multidisciplinary nature of the course opens up diverse career opportunities within construction beyond traditional roles."**

**AMELIA WILSON**  
Construction Project Management MSc

Professional bodies accrediting or recognising our courses include:





# CRIMINOLOGY

**Our Criminology teaching team is at the cutting edge of developments in critical and international criminology, and provides an inclusive learning environment for students from all backgrounds. You will benefit from our strong links with London-based non-governmental organisations and prisons, providing a unique insight into the field.**

Our Global Criminology course is designed to develop your knowledge and critical understanding of criminology as an interdisciplinary subject that incorporates legal, political, psychological and social scientific approaches to the study of crime, deviance, and criminal and social justice.

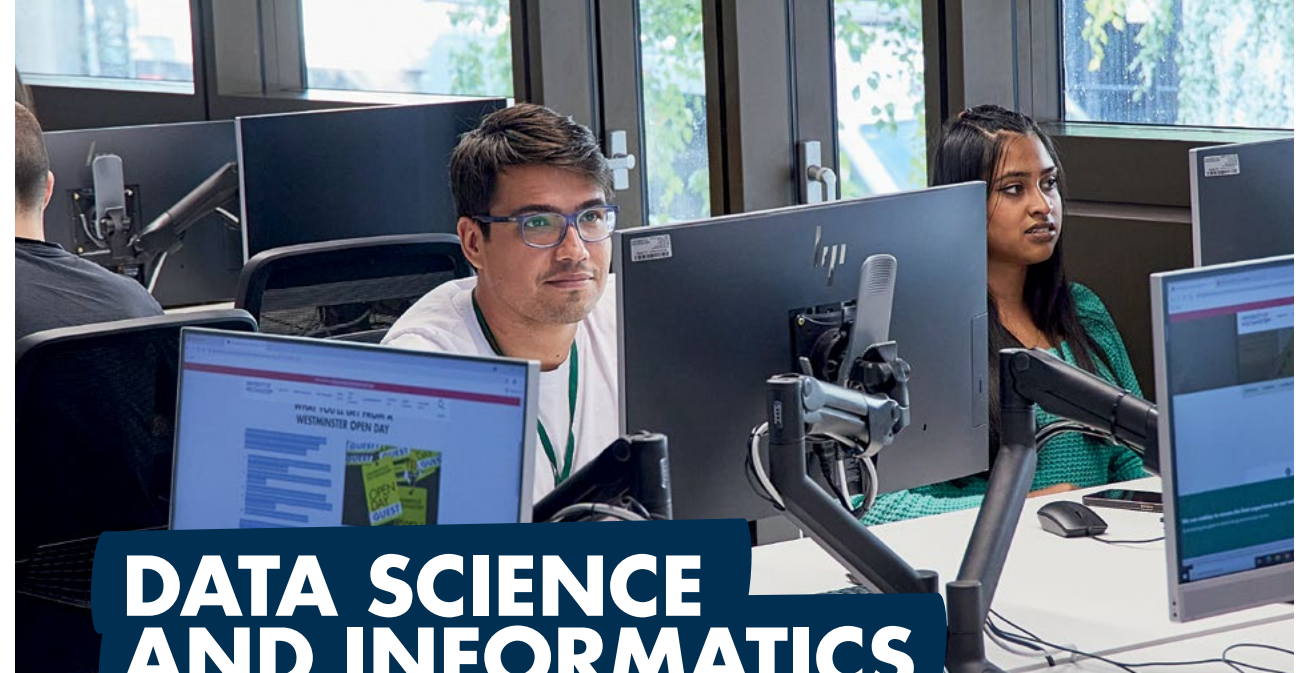
It will prepare you for a broad range of national and international career opportunities in the fields of criminal justice, human rights, victim and offender support, research, policing, and the probation and prison services. The academic knowledge and research skills gained by completing the course also put you in a strong position to undertake further research, such as a PhD.

**“This course provides a unique opportunity to study and research in collaboration with people in prison.”**

**ELLA WALSH**  
Global Criminology MA

**Global Criminology MA**  
Duration: 1 year FT / 2 years PT  
Start: September  
Campus: Regent

For full and most up-to-date information, see our website:  
[westminster.ac.uk/criminology](http://westminster.ac.uk/criminology)



# DATA SCIENCE AND INFORMATICS

**Our courses can transform you into a professional data scientist, architect or analyst who understands business challenges, and has the ability to conceive, develop and manage solutions that today's data-centric businesses need. By examining issues such as security, privacy and ethics in information systems, you will enhance your understanding of society's use of information systems.**

The Data Science and Analytics course addresses the growing need for information gathering and to exploit potential knowledge hidden in increasing amounts of routinely collected data. You will learn techniques and tools in areas such as machine learning, advanced analytics and statistics.

The Big Data Technologies course covers applications of Big Data and technologies employed to underpin these applications, focusing on database management systems and data warehousing.

All our Master's teaching is informed by links to industry and is supported by research conducted by in-house research teams active in areas such as data science and analytics, health and social care modelling, computational intelligence, parallel computing, distributed and intelligent systems, and semantic computing.

For full and most up-to-date information, see our website:  
[westminster.ac.uk/data-science-and-informatics](http://westminster.ac.uk/data-science-and-informatics)

**Campus for all courses:**  
Cavendish

**Big Data Technologies MSc**  
Duration: 1 year FT / 2 years PT  
Start: September and January  
This course is accredited by BCS, The Chartered Institute for IT for the purposes of partially meeting the academic requirement for registration as a Chartered IT Professional and partially meeting the academic requirement for a Chartered Engineer.

**Data Science and Analytics MSc**  
Duration: 1 year FT / 2 years PT  
Start: September and January  
This course is accredited by BCS, The Chartered Institute for IT for the purposes of partially meeting the academic requirement for registration as a Chartered IT Professional and partially meeting the academic requirement for a Chartered Engineer.

**“I really enjoyed working with my classmates. They came from such a wide variety of backgrounds and industries.”**

**GABRIEL AVERIA**  
Data Science and Analytics MSc,  
formerly known as Business Intelligence and Analytics MSc

Professional bodies accrediting or recognising our courses include:





**“The University has provided on-campus talks with highly qualified professional economists in many areas.”**

**FERNANDA GONCALVES DA SILVA**  
Economic Policy and Analysis MSc

## ECONOMICS

Studying economics enables you to understand the key global issues of the day. It provides the tools and techniques for individuals, businesses and governments to analyse and interpret the issues and problems they face.

With a strong research profile, we are particularly respected in the areas of applied research in labour and education economics. Other areas of research strength include macroeconomics, financial econometrics, international economics and development economics.

We pride ourselves on inclusive and innovative approaches to student learning and research-informed teaching. You will gain an in-depth knowledge of the latest theories, practices and key concepts in economics, and will develop the practical skills needed by a working economist.

There are growing opportunities for graduates with a practically focused knowledge of economics to develop careers as professional economists, managers, business analysts or consultants in private, public and third sector organisations.

The skills and knowledge gained with us will open up a range of opportunities to build a career in government or consultancies, as economic analysts, regulatory economists and market analysts. Previous graduates have found employment at organisations such as the International Monetary Fund, Rio de Janeiro Mayor’s Office, Shelter (UK housing charity) and the UK Government Economic Service, including Ofcom and Ofgem.

For Global Development MA see page 56.

### Economic Policy and Analysis MSc

Duration: 1 year FT  
Start: September and January  
Campus: Marylebone



**We have strong links with the Government Economic Service and the Society of Professional Economists.**



## ENGLISH AND CREATIVE WRITING

As a dynamic institution, we offer a thought-provoking and productive environment in which to work and study. Our lively postgraduate and research culture embraces a range of different subject areas, critical approaches and professional practices.

Our diversity is our strength. There is always a stimulating interchange of ideas within and across the different fields, and a wonderful range of expertise available among our staff, comprising well-known academics, writers, curators and artists.

Based in the heart of London, we have strong collaborative relationships with cultural institutions in the UK, such as Tate and the Museum of London, as well as abroad with the Smithsonian Institution, Washington, D.C.

All our MA and PhD programmes are intellectually ambitious – we want to inspire you to develop, whether you are starting, building or changing your career. Work placements are available on many of our courses, giving you professional experience, enhancing your employability and helping to build your connections. Graduates are well equipped for a variety of roles, including as content writers, editors, journalists, publishing professionals or teachers.

**Campus for all courses:**  
*Regent unless otherwise stated*

**Creative Writing: Writing the City MA**  
Duration: 1 year FT / 2 years PT  
Start: September and January

**Cultural and Critical Studies MA**  
Duration: 1 year FT / 2 years PT  
Start: September and January

**English Language and Linguistics MA**  
Duration: 1 year FT / 2 years PT  
Start: September and January

**English Language and Literature MA**  
Duration: 1 year FT / 2 years PT  
Start: September and January

**English Literature: Modern and Contemporary Fictions MA**  
Duration: 1 year FT / 2 years PT  
Start: September and January

**Professional Writing MA**  
Duration: 1 year FT / 2 years PT  
Start: September and January

**Professional Writing with Extended Work Placement MA**  
Duration: 2 years FT  
Start: September

**Teaching English to Speakers of Other Languages (TESOL) MA**  
Duration: 1 year FT / 2 years PT  
Start: September and January

**Teaching English to Speakers of Other Languages (TESOL) MA**  
Duration: 1 year FT  
Start: September

**ONLINE**

**“The lecturers are excellent with a wealth of subject knowledge that inspires confidence.”**

**MONIKA WOKO**  
English Literature: Modern and Contemporary Fictions MA





# FASHION

Westminster has a world-class reputation for producing highly creative fashion professionals. To maintain this position, we continue to develop innovative courses devoted to training the next generation of creative industry leaders, entrepreneurs and designers, while simultaneously cultivating their critical understanding of the fields in which they work.

A unique draw is the Westminster Menswear Archive, which consists of over 1,500 garments from world-renowned menswear designers and brands like Alexander McQueen, Massimo Osti, Craig Green, Stone Island, Carol Christian Poell, Jean Paul Gaultier, Kim Jones, Maison Margiela and Vexed Generation. This exceptional resource allows students, researchers and industry professionals to study examples of menswear design covering military uniforms, industrial garments, and designer outcomes from a technical and functional perspective.

Our alumni include London Fashion Week designers Roberta Einer, Claire Barrow, Liam Hodges and Ashley Williams; Stuart Vevers, Creative Director of Coach; and former President and Chief Creative Officer of Burberry, Christopher Bailey.

**Campus for all courses:**  
*Harrow*

**Fashion Business Management MA**  
Duration: 1 year FT  
Start: September

**Menswear MA**  
Duration: 1 year FT  
Start: September

**Menswear with Professional Experience MFA**  
Duration: 2 years FT  
Start: September



Student work clockwise from top-right: Gabriel Silva Barros, Jingni Liu, Stella Lam, Tianhao Li, Dina Maria U Ozorio Saldanha, Rintaro Tezuka





# FILM AND TELEVISION

We offer two distinct and highly sought-after postgraduate courses in Film and Television, which provide prospective students with different and exciting routes to further their careers in these competitive industries.

Our Business of Film MA aims to equip students with essential knowledge and skills in the film industry and is delivered in partnership with the BFI (British Film Institute) and Regent Street Cinema. The programme will prepare you for the challenges faced by the film sector today, build your industry contacts, and extend your entrepreneurial skills and commercial acumen. The course embraces creative problem solving in tandem with business and negotiation skills.

Part of our dedicated Screen portfolio, the Film, Television and Moving Image MA course offers a unique combination of theoretical and creative insights underpinned by contextual, specialist and interdisciplinary knowledge. Taught by leading academics, you will develop key skills for communicating about and with moving images across a range of contexts and platforms.

Both courses are offered through full- and part-time study modes, providing increased flexibility to those who may already be working in the industry, or are seeking to develop their skills.

**Film, Television and Moving Image MA**  
**Duration:** 1 year FT / 2 years PT  
**Start:** September  
**Campus:** Harrow

**Business of Film MA**  
**Duration:** 1 year FT / 2 years PT  
**Start:** September  
**Campus:** Regent  
*Delivered with our industry partners the BFI (British Film Institute) and Regent Street Cinema, this course allows students to access guest speakers, networking and select industry placement opportunities.*



Image credit: Darren Brade



**Our Business of Film MA is delivered in partnership with the BFI (British Film Institute) and Regent Street Cinema.**

For full and most up-to-date information, see our website: [westminster.ac.uk/film-and-television](http://westminster.ac.uk/film-and-television)



# LANGUAGES

In an increasingly global world, our rich portfolio of postgraduate courses seeks to meet the demand for interpersonal and intercultural communication across different languages. Through applied and professional languages, our focus is on languages being both explored and employed.

Our postgraduate courses are delivered by highly skilled professionals. Their practice-led approach is complemented by theory-informed lectures and seminars, taught by academics who are active researchers in the fields of translation studies, linguistics, intercultural communication and language pedagogy.

Our Specialised Translation and Translation and Interpreting courses focus on professional skills, leading directly into careers in the translation and interpreting industry.

The Teaching English to Speakers of Other Languages (TESOL) course provides advanced training in TESOL, with the option to additionally enrol at a CELTA course near the University. The International Communication - Liaison and Advocacy course focuses on liaison, negotiation and intercultural communication.

The University of Westminster is a Higher Education Language partner of the Chartered Institute of Linguists, member of the Institute of Translation and Interpreting, the Conférence Internationale permanente d'Instituts Universitaires de Traducteurs et Interprètes, the Association of Programmes in Translation and Interpreting Studies, UK and Ireland, Elia Exchange, and the UN MoU Network.

For full and most up-to-date information, see our website: [westminster.ac.uk/languages](http://westminster.ac.uk/languages)

**“I dreamt of becoming a freelance translator or interpreter but through this course, I discovered that I was well equipped for other roles too, like project management.”**

**LUCIO BAGNULO**  
 Translation and Interpreting MA, now Head of Translation & Language Strategy at Amnesty International, Madrid

**Campus for all courses:**  
 Regent unless otherwise stated

**International Communication – Liaison and Advocacy MA**  
**Duration:** 1 year FT / 2 years PT  
**Start:** September and January

**Specialised Translation MA**  
**Duration:** 1 year FT / 2 years PT  
**Start:** September

**Specialised Translation with Professional Experience MA**  
**Duration:** 2 years FT  
**Start:** September

**Teaching English to Speakers of Other Languages (TESOL) MA**  
**Duration:** 1 year FT / 2 years PT  
**Start:** September

**Teaching English to Speakers of Other Languages (TESOL) MA**

**Duration:** 1 year FT  
**Start:** September

**ONLINE**

**Translation and Interpreting MA**

**Duration:** 1 year FT  
**Start:** September

**Translation and Interpreting with Professional Experience MA**

**Duration:** 2 years FT  
**Start:** September

Professional bodies accrediting or recognising our courses include:





# LAW

Our Law School offers a broad and innovative range of postgraduate courses. Embedded in practice, our courses benefit from substantial input from professional experts and reflect the cutting-edge research led by the academic staff. You will develop original knowledge and skills which are relevant to a changing world, covering diverse areas of law, ranging from international commercial and corporate law to technology, international law and entertainment law.

Our academic staff are not only active researchers, passionate about their subject; they are also recognised experts, called upon to advise government bodies and courts on their specialist areas. You will be encouraged to become involved in our research activity as part of our vibrant postgraduate community.

Class sizes are kept relatively small to ensure that you have a first-class learning experience. The wide range of option modules offered on our courses allow you to tailor the course to reflect your interests and aspirations. You will also have the opportunity to participate in the student-led (pro bono) Legal Advice Clinic, and a variety of career and subject-specialist events throughout the year.

Graduates have gone on to have successful careers including as solicitors, barristers, family law mediators, and banking and finance lawyers for a variety of bodies including international organisations, government departments and NGOs.

**Campus for all courses:** Regent (Little Titchfield Street Building)

**Corporate Finance Law LLM**  
Duration: 1 year FT / 2 years PT  
Start: September and January

**Entertainment Law LLM**  
Duration: 1 year FT / 2 years PT  
Start: September and January

**International and Commercial Dispute Resolution Law LLM**  
Duration: 1 year FT / 2 years PT  
Start: September and January

**International Commercial and Corporate Law LLM**  
Duration: 1 year FT / 2 years PT  
Start: September and January

**International Law LLM**  
Duration: 1 year FT / 2 years PT  
Start: September and January

**Law and Technology LLM**  
Duration: 1 year FT / 2 years PT  
Start: September

**Legal Practice LLM / PGDip**  
Duration: 1 year FT / 2 years PT  
Start: September

*The LLM incorporates the Legal Practice Course and is accredited by the Solicitors Regulation Authority (SRA). Students may also study for the Postgraduate Diploma which includes only the necessary LPC modules. The LPC remains a valid qualification route after SQE.*

**Professional Legal Practice LLM / PGDip**  
Duration: 1 year FT / 2 years PT  
Start: September

*This conversion course is designed for non-law graduates.*



# MARKETING

Businesses need people who can design and manage innovative marketing strategies. Our exciting and contemporary courses will prepare you for success in the marketing world, with the option to focus on digital marketing or data analytics using our specialist facilities.

You might be looking to change career or want to specialise in the fast-changing areas of marketing and marketing communications. Whatever your interest, our programmes combine theory with practice in developing the attributes and specialist skills you need to confidently develop your career and respond to the changing business environment. Optional work-based learning modules are available on some programmes.

We have strong links with the Chartered Institute of Marketing (CIM), Digital Marketing Institute (DMI), Institute of Data and Marketing (IDM) and the Institute of Practitioners in Advertising (IPA). This is reflected in the high level of guest speakers from industry who regularly contribute to our courses. Our dedicated, multicultural staff bring academic and real-world practitioner expertise to the learning experience and take a proactive approach to inclusivity, diversity and equality.

Our courses will prepare you for a wide variety of roles in business, such as account executive, brand manager, digital marketing executive, founder and CEO, and sales and marketing manager. Recent graduates have found employment in organisations including Adidas, Diageo, IMG Media, M&C Saatchi, McLaren Automotive, MediaCom and Unilever.

**Campus for all courses:** Marylebone

**Data and Marketing Analytics MSc**  
Duration: 1 year FT  
Start: September and January

**Digital Marketing Management MSc**  
Duration: 1 year FT  
Start: September and January  
*This course is accredited by the Digital Marketing Institute, the Institute of Data and Marketing and the Chartered Institute of Marketing with a Graduate Gateway programme status.*

**Marketing Communications MA / MSc**  
Duration: 1 year FT  
Start: September and January  
*This course is accredited by the Digital Marketing Institute and the Institute of Data and Marketing. It prepares you to take the exam for the IPA Global Foundation Certificate. In addition, students gain membership of the Chartered Institute of Public Relations. This course is now also endorsed by the Chartered Institute of Marketing.*

**Marketing Management MA / MSc**  
Duration: 1 year FT  
Start: September and January  
*This course is accredited by the Digital Marketing Institute and the Chartered Institute of Marketing with Graduate Gateway programme status.*

**"Our lecturers have provided us with real-world knowledge and equipped us with the right tools to help us become more employable."**

**ANDREA LIN**  
Digital Marketing Management MSc

Professional bodies accrediting or recognising our courses include:





# MEDIA AND COMMUNICATION

Our courses lead the way in establishing new avenues of practice and interdisciplinary thought. With teaching by groundbreaking researchers and industry professionals, we will foster your capacity to develop creative media practices while deepening your understanding of the underpinning theory.

We will help you explore media and communication in the context of the individual, organisations and society. Taking an interdisciplinary approach, our courses tackle diverse issues ranging from communication policy, global media, development, social media and social change, right through to big data and applications of AI.

Many teaching staff are internationally renowned researchers and members of the University's Communication and Media Research Institute (CAMRI). CAMRI is one of the world's foremost research centres for media and communication studies.

Our graduates go on to succeed in a wide range of careers as journalists, media and digital media practitioners, campaign communicators, editors, academics and entrepreneurs.

**"The course was fascinating, inspiring, brilliantly practical and intellectually stimulating."**

**DAVID SMITH**  
Media, Campaigning and Social Change MA

Professional bodies accrediting or recognising our courses include:



**AI, Data and Communication MA**  
Duration: 1 year FT / 2 years PT  
Start: September  
Campus: Cavendish / Harrow

**Communication MA**  
Duration: 1 year FT / 2 years PT  
Start: September  
Campus: Harrow

**Digital Media: Storytelling and Production MA**  
Duration: 1 year FT  
Start: September  
Campus: Harrow

**Global Media MA**  
Duration: 1 year FT / 2 years PT  
Start: September  
Campus: Harrow

**Interactive Media Practice MA**  
Duration: 1 Year FT / 2 years PT  
Start: September  
Campus: Harrow

**International Media Business MA**  
Duration: 1 year FT  
Start: September  
Campus: Harrow

**Media and Development MA**  
Duration: 1 year FT / 2 years PT  
Start: September  
Campus: Harrow

**Media, Campaigning and Social Change MA**  
Duration: 1 year FT / 2 years PT  
Start: September  
Campus: Cavendish / Harrow

*This course is available as a postgraduate certificate or diploma. See page 31 for details*

**Media Management MA**  
Duration: 1 year FT / 2 years PT  
Start: September  
Campus: Harrow

**Multimedia Journalism MA (Broadcast / Print and Online)**  
Duration: 1 year FT / 2 years PT  
Start: September  
Campus: Harrow

*This course is accredited by the Broadcast Journalism Training Council. The Print and Online course is available as a postgraduate diploma. See page 31 for details.*

**Public Relations MA**  
Duration: 1 year FT / 2 years PT  
Start: September  
Campus: Harrow

**Social Media and Digital Communication MA**  
Duration: 1 year FT / 2 years PT  
Start: September  
Campus: Harrow

For full and most up-to-date information, see our website:  
[westminster.ac.uk/media-and-communication](http://westminster.ac.uk/media-and-communication)



# MUSIC

Our music courses are established and internationally recognised in their respective fields. We continue to develop generations of creative, responsive and critically agile music, audio and media professionals through our progressive approach to delivering these specialist subjects.

We are proud of the success of our graduates. The Audio Production course has produced BAFTA and Grammy Award winners, creative executives, educators, music and audio-visual producers, recording artists, and interactive and film sound designers. Graduates from this course work at the high end of the creative industry, at the BBC, Pinewood, Sony EA, Yamaha, Berklee, Disney, Paramount and Apple.

Our Music Business Management graduates can be found working around the world at the cutting edge of new music enterprises such as iTunes, Spotify, Believe Digital, Shazam, Ticketmaster, Live Nation and Kobalt Music, and in the global entertainment powerhouses of Universal Music Group, Sony Music Entertainment and Warner Music Group.

**Audio Production MA**  
Duration: 1 year FT / 2 years PT  
Start: September  
Campus: Harrow

*This course is accredited by JAMES (Joint Audio Media Education Support).*

**Music Business Management MA**  
Duration: 1 year FT / 2 years PT  
Start: September  
Campus: Cavendish / Harrow

Professional bodies accrediting or recognising our courses include:



For full and most up-to-date information, see our website:  
[westminster.ac.uk/music](http://westminster.ac.uk/music)



# NUTRITION AND PUBLIC HEALTH

Our courses address nutritional and wellbeing issues across a wide range of people. This includes people with health issues relating to obesity and diet-related diseases, those in countries with issues relating to malnutrition and micronutrient deficiencies, and elite athletes requiring nutritional advice to optimise performance.

You will explore the evidence for the relationship between diet, physical activity and health, and the role that interventions can have in promoting health and treating disease. As a result, you will gain the specialist knowledge and practical skills you need to meet your future career challenges.

In the field of public health and wellbeing, we have an international reputation for innovative courses with a relevant and authentic response to the changing external context that we operate in. Our Health and Wellbeing MSc considers the changing health paradigm, both globally and in the UK, with a focus on individual and community wellbeing. Excitingly, this course is also being offered as a two-year route, one year of which is a work placement, enabling you to gain valuable experience in a health setting. Our Global Public Health with Data Science MSc brings together these key areas to support decision making, advance evidence-based policies and drive strategies in combating diseases by analysing omics, health, lifestyle and data.

Graduates in this field can expect to gain employment as nutrition advisers, dieticians, sports nutritionists, teachers or researchers.

**Campus for all courses:**  
Cavendish

**Global Public Health Nutrition MSc**  
Duration: 1 year FT / 2 years PT  
Start: September

*The course is accredited by the Association for Nutrition as part fulfilment of the requirements for registration as an associate Public Health Nutritionist.*

**Global Public Health with Data Science MSc**  
Duration: 1 year FT / 2 years PT  
Start: September

**Health and Wellbeing MSc**  
Duration: 1 year FT  
Start: September

**Health and Wellbeing with Professional Experience MSc**  
Duration: 2 years FT  
Start: September

**Sport and Exercise Nutrition MSc**  
Duration: 1 year FT / 2 years PT  
Start: September  
*Accredited by the Association for Nutrition and the Sport and Exercise Nutrition register.*

**“The best aspect of being part of the University is the support from the lecturers. They go above and beyond.”**

**BEN OFOSUHENEN**  
Global Public Health Nutrition MSc

*Professional bodies accrediting or recognising our courses include:*



# POLITICS AND INTERNATIONAL RELATIONS

Recognised for our expertise in this field, we are proud of our diverse student body, non-hierarchical culture and challenging, critical research. We are committed to enhancing your learning experience through both formal teaching and broader intellectual activities.

We have an international reputation for innovative research in politics and international relations, especially through our renowned Centre for the Study of Democracy. Our staff are active researchers bringing their knowledge and expertise into their teaching on our postgraduate courses, enabling you to engage with contemporary debates and issues at the highest level.

In addition to research-led teaching, we regularly invite external speakers to take part in our well-established series of seminars, public lectures and conferences. We also support an enhanced student experience through our pioneering Democratic Education Network.

Graduates work in a variety of roles, including as diplomats, journalists, policy analysts, civil servants, researchers and teachers.

**“It is great to engage with diplomats and senior policy practitioners as part of my course.”**

**JOANNA ENU OBENG**  
International Relations MA

**Campus for all courses:** Regent

**Diplomacy and Global Politics MA**  
Duration: 1 year FT / 2 years PT  
Start: September and January

**Global Development MA**  
Duration: 1 year FT / 2 years PT  
Start: September and January

**International Relations MA**  
Duration: 1 year FT / 2 years PT  
Start: September and January

**International Relations and Democratic Politics MA**  
Duration: 1 year FT / 2 years PT  
Start: September and January

**International Relations and Security MA**  
Duration: 1 year FT / 2 years PT  
Start: September and January



# PSYCHOLOGY

The University of Westminster has a strong reputation for postgraduate teaching in psychology. We offer exciting and distinctive courses in some of the most interesting areas of the subject. Our supportive, interactive learning environment equips you with theory and insights, as well as skills that can be applied in a professional setting.

Each course is developed and delivered by a team of enthusiastic, supportive psychologists who are all specialists in their fields. We believe strongly in maintaining close links between our teaching and research activities. You will be taught by active researchers, passionate about sharing their enthusiasm for their subject. Our vibrant research culture is distinctive for its openness, collaboration and interdisciplinary approach. We promote the interrelationship of research, enterprise, knowledge transfer and teaching activity.

Our Health Psychology MSc graduates have secured stage 2 training places to become Chartered Health Psychologists, while our Psychology MSc graduates have secured places on professional training courses that require Graduate Basis for Chartered Membership of the British Psychological Society. Our new Forensic Psychology MSc integrates key concepts of development, training, research methodologies, and applying psychological principles within the legal and criminal justice systems.

Graduates from our psychology courses are well equipped for a variety of related roles, including counsellors, psychotherapists, health consultants, behavioural insights advisers, business and organisational psychologists, public health specialists and psychological wellbeing practitioners.

## Business and Organisational Psychology MSc

**Duration:** 1 year FT / 2 years PT  
**Start:** September  
**Campus:** Marylebone  
*This course is accredited by the Association for Business Psychology.*

## Counselling PGDip

**Duration:** 2 years PT  
**Start:** September  
**Campus:** Cavendish

## Forensic Psychology MSc

**Duration:** 1 year FT / 2 years PT  
**Start:** September  
**Campus:** Cavendish  
*This course is pending accreditation. Please check our website for the latest course information.*

## Health Psychology MSc

**Duration:** 1 year FT / 2 years PT  
**Start:** September  
**Campus:** Cavendish  
*This course is accredited by the British Psychological Society (BPS).*

## Psychology MSc

**Duration:** 1 year FT / 2 years PT  
**Start:** September  
**Campus:** Cavendish  
*This course is accredited by the British Psychological Society (BPS).*

**“I enjoy the group dynamic – everyone has their own perspective, which has made my learning so much richer.”**

**HESTER THOMPSON**  
 Psychology MSc

*Professional bodies accrediting or recognising our courses include:*



# TOURISM AND EVENTS MANAGEMENT

With over 20 years of experience in tourism and events education, we are committed to evolving and innovating our courses to adapt to these dynamic industries. This is evident in our Tourism Management MA and Event Design and Management MA programmes. The Tourism Management MA focuses on creating and enhancing the sense of place and visitor experience, taking into account communities, technologies and sustainability. The Event Design and Management MA emphasizes the creative design, delivery and experience of modern, engaging events.

The tourism industry has in recent years been one of the largest employers globally, and the events industry has seen significant growth in employment options over the past decade. As the global economy evolves post-pandemic, events and tourism are playing an increasingly important role in drawing visitors back to our cities.

At Westminster, we remain a leader in the delivery of quality tourism and event management courses. Our experienced academics and industry practitioners will help you explore the challenges and opportunities recent events have brought to the sector. By studying in the heart of one of world's leading tourist destinations, surrounded by world events, you will develop the skills you need to manage tourism or stage events in other host destinations.

**Campus for all courses:**  
 Marylebone

## Event Design and Management MA

**Duration:** 1 year FT / 2 years PT  
**Start:** September

## Tourism Management MA

**Duration:** 1 year FT / 2 years PT  
**Start:** September  
*This course is accredited by the Tourism Management Institute.*

*Professional bodies accrediting or recognising our courses include:*





# TRANSPORT AND LOGISTICS

Recent world events have highlighted the critical importance of this discipline and its impact on life and society across the world. Highly regarded by students and employers in the UK and internationally, our courses equip you for professional life, planning and managing the future of our transport and logistics systems.

Our academic staff enjoy an international reputation, and our degrees are known for their combination of pure, practice-led and applied approaches. You will develop your own specialist expertise working collaboratively with students from across the globe.

Our freight transport and logistics research group explores sustainability and supply chains efficiency, while our award-winning air traffic management research team is recognised as a leader in Europe. Our active and sustainable travel research has won prizes for its outstanding impact on public policy, and we have a new Active Travel Academy linked to the transport planning courses.

Graduates have gone on to enjoy a range of careers in sectors including logistics management, supply chain analysis, transport planning and operations management, as well as in a variety of public and private sector organisations and consultancies.

**Campus for all courses:**  
Marylebone

**Air Transport Planning and Management MSc**  
**Duration:** 1 year FT / 2 years via block release  
**Start:** September and January

**Logistics and Supply Chain Management MSc**  
**Duration:** 1 year FT / 2 years PT  
**Start:** September  
*This course is accredited by the Chartered Institute of Logistics and Transport.*

**Transport Planning MSc**  
**Duration:** 1 year FT / 2 years PT  
**Start:** September

*This course normally gives full exemption from the examination requirement for membership of the Chartered Institute of Logistics and Transport, and also forms part of the pathway to the Transport Planning Professional qualification.*

*This course is pending accreditation. Please check our website for the latest course information.*

Professional bodies accrediting or recognising our courses include:



# ESSENTIAL INFORMATION

## We're here to help

Our Course Enquiries Team provides information and advice on a range of issues, including:

- course information
- entry requirements for UK and international students
- the application process
- postgraduate open events
- tuition fees and payments

Chat to our Course Enquiries Team via our live chat: [westminster.ac.uk/study](https://www.westminster.ac.uk/study)

E: [course-enquiries@westminster.ac.uk](mailto:course-enquiries@westminster.ac.uk)

T: +44 (0) 20 7911 5000 ext 65511

# APPLYING TO WESTMINSTER

## APPLYING TO WESTMINSTER

### Taught Master's

Specific entry requirements including English language requirements are listed on the course pages. Also see [westminster.ac.uk/study/english-language-requirements](https://westminster.ac.uk/study/english-language-requirements). If your degree (or equivalent qualification) is from outside the UK, visit [westminster.ac.uk/international](https://westminster.ac.uk/international) for information on our requirements.

Apply online by visiting [westminster.ac.uk/postgraduate-courses](https://westminster.ac.uk/postgraduate-courses). Select your desired course and click 'Apply' to submit your application directly.

### Research degrees

MPhil/PhD applications have different procedures. Visit [westminster.ac.uk/research-degrees](https://westminster.ac.uk/research-degrees) for details.

### Application deadlines

Courses start in September and January. See the website for the application deadlines: [westminster.ac.uk/study/postgraduate/how-to-apply](https://westminster.ac.uk/study/postgraduate/how-to-apply)

Apply early, especially if you need a visa, are submitting a portfolio, or require an interview. Early application is also crucial for scholarship considerations.

### Gaining credit for what you have learnt

Recognition of Prior Experiential Learning (RPEL) recognises knowledge or skills acquired through life or work experience, which have not been formally recognised by an academic or professional certification. If you have relevant experience, you may be eligible for module exemptions through Recognition of Prior Certificated Learning (RPCL) or Recognition of Prior Experiential Learning (RPEL). Visit [westminster.ac.uk/rpcl](https://westminster.ac.uk/rpcl) for details.

### Students with disabilities

Indicate on your application the nature of disability or long-term health condition. We will contact you to determine the appropriate support package.

### Fees

Course fees are stated on the individual postgraduate course pages. Also see [westminster.ac.uk/study/fees-and-funding](https://westminster.ac.uk/study/fees-and-funding) for further information.

Indicate on your application if you have previously studied at Westminster as you may be eligible for the alumni discount.

### Visas

You may need a visa to study in the UK. You must have accepted an offer of a place and have a Confirmation of Acceptance for Study (CAS) before you apply for your visa.

International students need a student visa to study for a full-time postgraduate diploma. You cannot apply for a visa to study for a part-time postgraduate diploma or certificate. These qualifications do not allow you to apply for the Graduate Route post-study work visa. For comprehensive information, visit: [westminster.ac.uk/international/visas-and-advice/visas](https://westminster.ac.uk/international/visas-and-advice/visas)

For additional guidance, contact our Course Enquiries Team: Live chat: [westminster.ac.uk/study](https://westminster.ac.uk/study) E: [course-enquiries@westminster.ac.uk](mailto:course-enquiries@westminster.ac.uk) T: +44 (0)20 7911 5000 ext 65511

## ENGLISH LANGUAGE DEVELOPMENT

### Pre-sessional English courses

For international students needing to improve language and academic skills to meet the requirements of postgraduate study. Courses include language development and a focus on discipline-specific studies and are available on campus or online. Students have access to our facilities and libraries.

### Academic English

We offer academic English modules to help you consolidate and improve your proficiency in academic English. We will determine the right level for you during orientation week.

For more information visit: [westminster.ac.uk/international/english-language-support](https://westminster.ac.uk/international/english-language-support)

## ACCOMMODATION

### Student accommodation

Available for full-time postgraduate students. Most are single study bedrooms with a shared kitchen and are located within easy reach of our campuses. Prices include all utilities.

### Private housing

Options vary widely in price. We provide extensive advice on finding suitable private accommodation. Remember to consider commuting costs when choosing where to live.

Find information on housing and tips on successful accommodation hunting at: [westminster.ac.uk/accommodation](https://westminster.ac.uk/accommodation)

## NOTES FOR APPLICANTS

Course details are accurate at time of publication. Check our website for the latest course information and any significant changes. We will keep you informed if a course is cancelled. Some modules, internships, or placements may be affected by government restrictions

Visit [westminster.ac.uk/terms-and-conditions](https://westminster.ac.uk/terms-and-conditions) for details.

### Data privacy

We take care to ensure the confidentiality of your application information. Your data will be used and stored in accordance with the University's Data Protection Policy.

To request any of your personal information, contact [dpa@westminster.ac.uk](mailto:dpa@westminster.ac.uk).

Photography by ADP, Simon Armstrong, George Baggaley, Andrea Baldrati Photography, Darren Brade, Claudia Cantarini, Megan Carnrite, Matt Clayton, Nick Daly, Sara Dominici, Siobhan Doran, David Freeman, Nina Hollington, Rory Lindsay, Michael Maziere, Joanne O'Brien, Chris Ongsiek, Kacper Rudolf, Paulina Todorova, Nick Turpin, UNICEF and Norikazu Yamamura.

Included on front cover, detail from 'Big Ben and Westminster Bridge at dusk, London, UK', Lukasz Pajor, Shutterstock.

Many thanks to all the students, alumni and staff who helped to produce this publication.

Produced by the University of Westminster. Printed by Belmont Press Ltd.

Published in August 2024. Information correct at the time of printing. For up-to-date information please check website.



Once you have finished with this prospectus please recycle it.

A charity and a company limited by guarantee. Registered office: 309 Regent Street, London W1B 2UW Registration number: 977818 10253/04.24/CH/BP

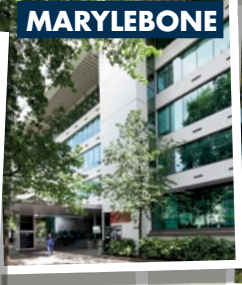
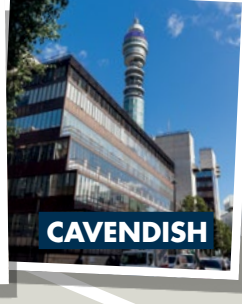


# INDEX

<b>A</b>	
Academic English courses.....	61
Accommodation for students.....	18, 62
Accounting and Finance courses.....	34
AI, Data and Communication MA.....	53
Air Transport Planning and Management MSc.....	59
Alumni.....	18
Applied Biotechnology MSc.....	39
Applying to Westminster.....	61
Architecture and Environmental Design MSc.....	35
Architecture and Environmental Design Postgraduate Certificate.....	35
Architecture, Interiors and Urban Design courses.....	35
Architecture MA.....	35
Architecture Postgraduate Diploma Professional Practice (RIBA pt III).....	35
Architecture & Sustainable Heritage MA.....	35
Art, Design and Visual Culture courses.....	37
Art and Emerging Technologies MA.....	37
Art and Visual Culture MA.....	37
Artificial Intelligence and Digital Health MSc.....	39
Audio Production MA.....	54
<b>B</b>	
Big Data Technologies MSc.....	44
Biological and Biomedical Sciences courses.....	39
Biomedical Sciences MSc.....	39
Business and Management courses.....	40
Business and Organisational Psychology MSc.....	40, 57
Business of Film MA.....	49
<b>C</b>	
Careers and Employability Service.....	16, 17
Campus.....	9–10, 65
Communication MA.....	53
Computer Science and Engineering courses.....	41
Construction Project Management MSc.....	42
Construction, Surveying and Real Estate courses.....	42
Contact details.....	60
Corporate Finance Law LLM.....	51
Counselling PGDip.....	57
Course enquiries.....	61, 67
Course structure.....	31
Creative Writing: Writing the City MA.....	46
Criminology course.....	43
Cultural and Critical Studies MA.....	37, 46
Cyber Security and Forensics MSc.....	41
<b>D</b>	
Data Science and Analytics MSc.....	44
Data Science and Informatics courses.....	44
Data and Marketing Analytics MSc.....	52
Digital Business MSc.....	40
Digital Marketing Management MSc.....	52
Digital Media: Storytelling and Production MA.....	53
Diplomacy and Global Politics MA.....	56
Disability support.....	17
Doctoral Researcher Development Programme.....	28
<b>E</b>	
Economic Policy and Analysis MSc.....	45
English and Creative Writing courses.....	46
Energy and Environmental Design Postgraduate Certificate.....	35
English Language and Linguistics MA.....	46
English Language and Literature MA.....	46
English language development.....	25, 61
English Literature: Modern and Contemporary Fictions MA.....	46
Entertainment Law LLM.....	51
Entrepreneurship, Innovation and Enterprise Development MSc.....	40
Entry requirements.....	61
Event Design and Management MA.....	58
Expanded Photography MA.....	37
<b>F</b>	
Facilities.....	9–10
Fashion Business Management MA.....	47
Fashion courses.....	47
Fees.....	61
Film and Television courses.....	49
Film, Television and Moving Image MA.....	49
Finance (International Finance) MSc.....	34
Finance and Accounting MSc.....	34
FinTech with Business Analytics MSc.....	34
Financial support.....	19
Forensic Psychology MSc.....	57
<b>G</b>	
Global Contemporary Art MA.....	37
Global Criminology MA.....	43
Global Development MA.....	56
Global Media MA.....	53
Global Public Health Nutrition MSc.....	55
Global Public Health with Data Science MSc.....	55
<b>H</b>	
Halls of residence.....	62, 65
Health Psychology MSc.....	57
Health and Wellbeing MSc.....	55
Health and Wellbeing with Professional Experience MSc.....	55
Human Resource Management MA.....	40

<b>I</b>	
Interactive Media Practice MA.....	37, 53
Interior Architecture MA.....	35
International and Commercial Dispute Resolution Law LLM.....	51
International Business and Management MSc.....	40
International Commercial and Corporate Law LLM.....	51
International Development Management MSc.....	40
International Human Resource Management MA.....	40
International Law LLM.....	51
International Communication – Liaison and Advocacy MA.....	50
International Media Business MA.....	53
International Planning and Sustainable Development MA / PGDip (with pathways).....	35
International Relations and Democratic Politics MA.....	56
International Relations and Security MA.....	56
International Relations MA.....	56
International student support.....	25
Investment and Risk Finance MSc.....	34
<b>L</b>	
Language courses.....	50
Law courses.....	51
Law and Technology LLM.....	51
Learning support.....	17
Legal Practice LLM / PGDip.....	51
Libraries and study spaces.....	11
Logistics and Supply Chain Management MSc.....	59
London life.....	5–8
<b>M</b>	
Management MA.....	40
Map.....	65–66
Marketing Communications MA / MSc.....	52
Marketing courses.....	52
Marketing Management MA / MSc.....	52
Master of Architecture (MArch) (RIBA pt II).....	35
Master of Business Administration (MBA).....	40
Media and Communication courses.....	53
Media and Development MA.....	53
Media Management MA.....	53
Media, Campaigning and Social Change MA / PGDip / PGCert.....	53
Menswear MA.....	47
Menswear with Professional Experience MFA.....	47
Mentoring scheme.....	16
Multimedia Journalism MA / PGDip (Broadcast / Print and Online).....	53
Museums, Galleries and Contemporary Culture MA.....	37
Museums, Galleries and Contemporary Culture with Professional Experience MA.....	37
Music Business Management MA.....	54
Music courses.....	54
<b>N</b>	
Nutrition and Public Health courses.....	55
<b>O</b>	
Online course.....	46
<b>P</b>	
Pharmaceutical Science MSc.....	39
PhD research degrees.....	28
Politics and International Relations courses.....	56
Postgraduate loans.....	19
Pre-Master's courses.....	25
Pre-sessional English courses.....	25, 61
Private housing.....	62
Professional development.....	23, 25
Professional Legal Practice LLM / PGDip.....	51
Professional Writing MA.....	46
Professional Writing with Extended Work Placement MA.....	46
Project Management MSc.....	40
Psychology courses.....	57
Psychology MSc.....	57
Public Relations MA.....	53
<b>R</b>	
Real Estate Development MSc.....	42
Recognition of Prior Certificated Learning (RPCL).....	61
Research.....	27
Research degrees.....	28, 61
<b>S</b>	
Scholarships.....	19
Short courses.....	23, 25
Social Media and Digital Communication MA.....	53
Software Engineering (Conversion) MSc.....	41
Specialised Translation MA.....	50
Specialised Translation with Professional Experience MA.....	50
Sport and Exercise Nutrition MSc.....	55
Study Abroad Programme.....	25
Subject areas.....	33
Support services.....	17–18
Sustainability Management and Innovation MSc.....	40
<b>T</b>	
Teaching English to Speakers of Other Languages (TESOL) MA / Online.....	46, 50
Terms and conditions.....	62
Tourism and Events Management courses.....	58
Tourism Management MA.....	58
Translation and Interpreting MA.....	50
Translation and Interpreting with Professional Experience MA.....	50
Transport and Logistics courses.....	59
Transport Planning MSc.....	59
<b>U</b>	
Urban and Regional Planning MA.....	35
Urban Design MA / PGDip / PGCert.....	35
<b>W</b>	
Wellbeing and health services.....	18
Working with our business community.....	23–24
<b>Z</b>	
Zone29.....	24

# OUR CAMPUSES



**OUR CENTRAL CAMPUSES**

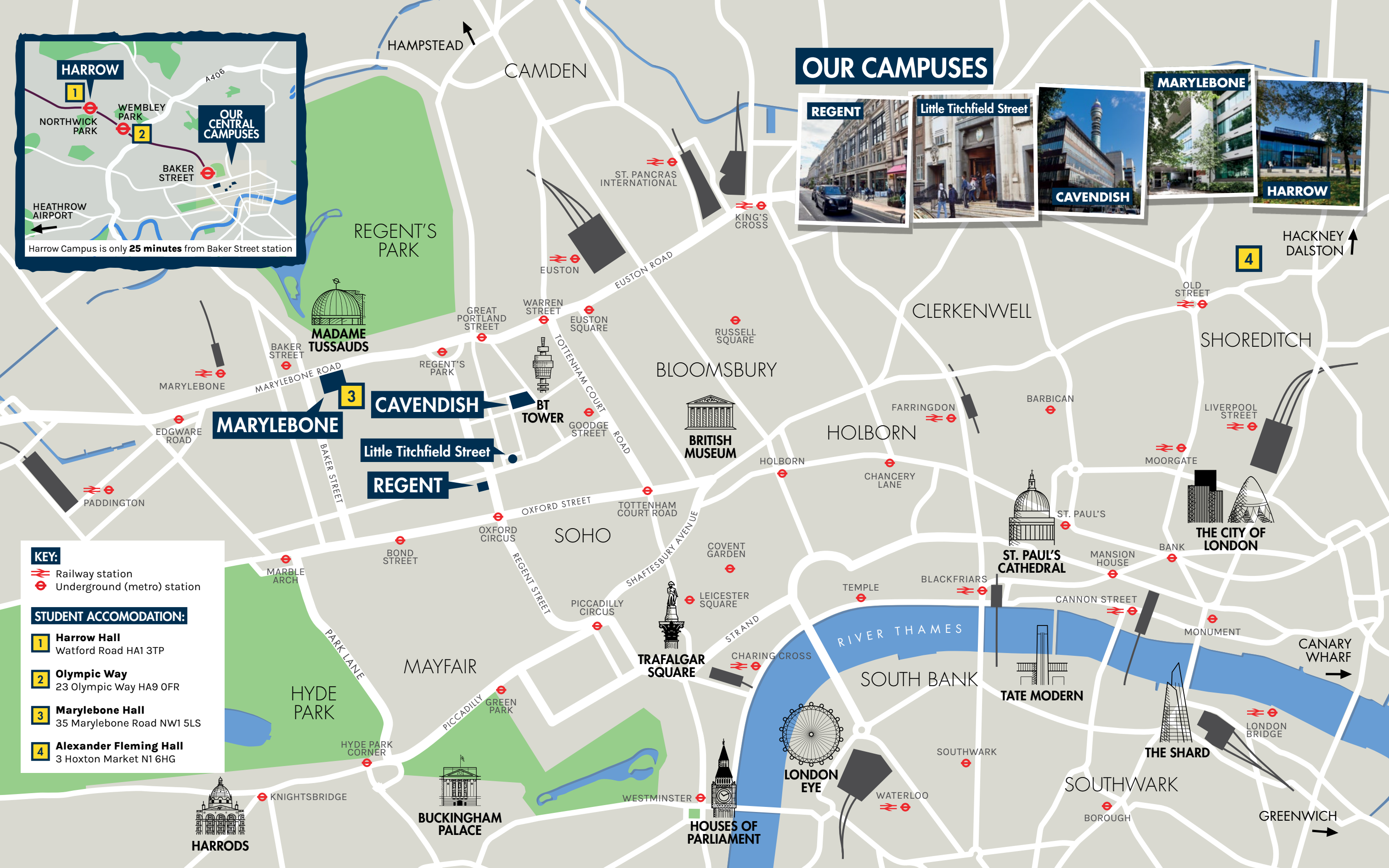
Harrow Campus is only **25 minutes** from Baker Street station

**KEY:**

- Railway station
- Underground (metro) station

**STUDENT ACCOMODATION:**

- 1 Harrow Hall**  
Watford Road HA1 3TP
- 2 Olympic Way**  
23 Olympic Way HA9 0FR
- 3 Marylebone Hall**  
35 Marylebone Road NW1 5LS
- 4 Alexander Fleming Hall**  
3 Hoxton Market N1 6HG



# westminster.ac.uk

 uniofwestminster  uniwestminster

 uniofwestminster  University of Westminster

## CHINA

[westminsteruniversity.cn](http://westminsteruniversity.cn)

 westminsteruni  westminsterchina

## SOUTH ASIA

 westminster\_southasia

## COURSE ENQUIRIES

T: +44 (0)20 7911 5000 ext 65511

E: [course-enquiries@westminster.ac.uk](mailto:course-enquiries@westminster.ac.uk)

## VISIT US

To find out more about our courses, career opportunities and to meet the course team, visit us either online or in person.

## OPEN DAYS AND EVENINGS

For the latest information on open days, visit: [westminster.ac.uk/open-days](http://westminster.ac.uk/open-days)

To download an accessible digital version of our prospectus, visit: [westminster.ac.uk/pgprospectus](http://westminster.ac.uk/pgprospectus)