



**UNIVERSITY OF  
WESTMINSTER**

**Working in the UK:**

**Student visa &  
the Graduate Route**

# Working with a Student visa

NOTE: The content of this presentation is based on the Immigration Rules in force on 13th January 2025. Immigration Rules are subject to change - always refer to official sources for most up-to-date information.



# Working as a student

- Helps with living expenses
- Allows you to gain UK work experience
- Helps with networking and may increase your chances of finding work after studies

But

- Must not interfere with your studies
- Is restricted by your visa



# How many hours can I work?

- Most students can work **20 hours per week** during term-time (check your visa)
- Working above 20 hours per week is permitted:
  - during official vacation periods (Christmas break and spring break for Master's degree students – **no summer break**)
  - Before the course starts and after it ends (usually CAS start and end dates)



# What kind of jobs can I take?

You can do most kinds of work, but you **must not**:

- be self-employed
- engage in a business activity
- take a permanent full-time job
- be employed as a professional sportsperson or sports coach
- be employed as an entertainer



# Practical information

- Your employer will ask you for a **share code** to check if you can work in the UK: [www.gov.uk/prove-right-to-work](https://www.gov.uk/prove-right-to-work)
- You may be asked for a letter confirming your **term dates**: [www.westminster.ac.uk/official-letter-requests](https://www.westminster.ac.uk/official-letter-requests)
- You will need to apply for a **National Insurance number**
  - You can apply before or after starting work
  - It can take around 4 weeks to get it
  - You apply online: [www.gov.uk/apply-national-insurance-number](https://www.gov.uk/apply-national-insurance-number)

# Frequently Asked Questions

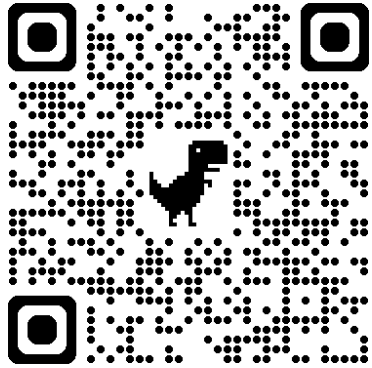
- Does working remotely for an overseas employer count towards the 20h limit?  
**Yes.**
- What about an unpaid internship? **Yes, it also counts towards the limit.**
- What if I exceed the 20h limit?  
**Don't – this can affect your current visa as well as future visa applications.**
- Can I continue my overseas/online freelance work in the UK?  
**No, Student visa does not permit self-employment.**

Gray areas? Do not take the risk – stick to the types of work which are permitted.

# I want to know more...

Dog-walking, writing and publishing, selling on eBay...?

Have a look at the UKCISA blog: 'A working definition'



[www.ukcisa.org.uk/blog/6257/a-working-definition](http://www.ukcisa.org.uk/blog/6257/a-working-definition)





# Student visa work - summary

Student visa work:

- Must not interfere with your studies
- The number of hours is restricted
- Some jobs are not permitted



# Working after your course ends



# Student visa – 'post study' period

- You can work over 20h/week once you have completed your academic work, and your CAS end date has passed
- This is usually during the last 4 months of your visa
- You can't be self-employed or work in a permanent full-time role (Student visa restrictions still apply)

What if you want to stay longer?



# Graduate Route visa



Key facts	
Type of visa	Work visa – after studies
Duration	2 years (UG/Master's) 3 years (PhD)
Main eligibility requirement	Studying and completing a degree course in the UK with a Student visa

# Applying at the right time

Students can apply when all the below points are met at the same time:

- 1) You successfully complete your course
- 2) The University informs the Home Office that you have completed
- 3) You are in the UK
- 4) Your Student visa is still valid



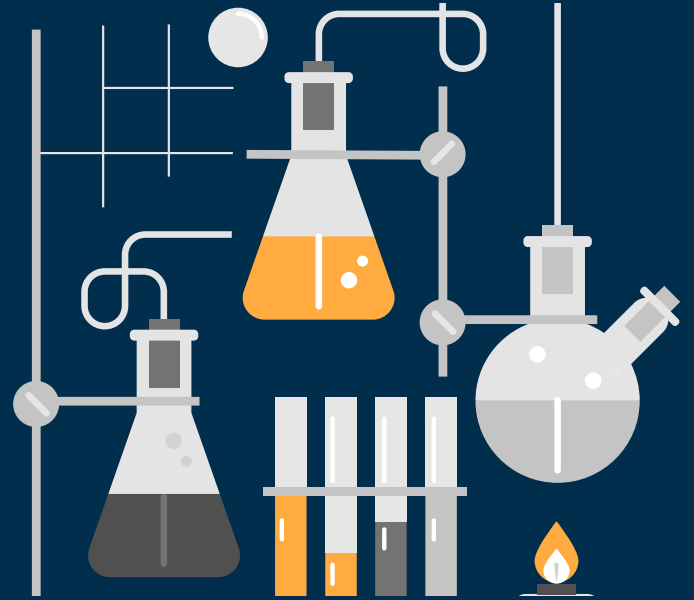
# Graduate Route visa: your rights

- **Work:** permitted; no weekly limit; self-employment allowed  
Not permitted: work as a professional sportsperson
- **Study:** restricted; you will not be able to study on a course for which you could receive a Student visa sponsorship; other study permitted
- **Family members:** Dependants can apply to extend their visas with you only if they are already in the UK as dependants under your Student visa
- **Extensions:** You cannot extend this visa, or receive this visa again in the future, but you may be able to switch into another work route (e.g. Skilled Worker)

# What could affect your eligibility?

- Not completing your course or a delay in completing your course
- Changes to your course
- Changes to your visa

Student Advice team at the University is here to help address your queries and advise on your options.



# Further resources

Our website

[www.westminster.ac.uk/working-in-the-uk-with-a-student-visa](http://www.westminster.ac.uk/working-in-the-uk-with-a-student-visa)

[www.westminster.ac.uk/GRV](http://www.westminster.ac.uk/GRV)

UKCISA

[www.ukcisa.org.uk](http://www.ukcisa.org.uk)

Get in touch with us

[www.westminster.ac.uk/student-advice](http://www.westminster.ac.uk/student-advice)

