



UNIVERSITY OF  
WESTMINSTER 

**LET'S  
MAKE IT  
HAPPEN**

**POSTGRADUATE  
PROSPECTUS 2024**

# TOGETHER,

**Turn your ambition  
into reality at  
the University of  
Westminster, a global  
university with London  
energy and home to  
endless opportunities.**

# LET'S MAKE IT HAPPEN



# WELCOME TO WESTMINSTER

Welcome to Westminster – a place where discoveries are made, diversity is celebrated, and everyone is welcome.

Established as London’s first polytechnic in 1838, the University of Westminster continues to deliver leading-edge, career-focused education to students from all backgrounds and more than 160 countries around the world.

Our diverse, international community and unique location in one of the world’s most dynamic, creative and innovative cities means we are a truly global university with London energy.

This outlook, alongside our progressive, compassionate and responsible values, underpins our commitment to help all of our students fulfil their potential and contribute to a more sustainable, equitable and healthier world.

We know that the decision to undertake postgraduate study is not taken lightly. That’s why we ensure that you are fully supported throughout your journey with us – from application to graduation and beyond.

Whether studying full- or part-time, all students have the opportunity to become part of our vibrant and supportive community, where you can bring your whole self and feel you belong.

We offer personalised and authentic education, informed by professional practice – and work


closely with businesses and industry to ensure that you have all the skills you need to forge your career successfully in a rapidly changing world.

During your time with us, and after graduation, you will have access to extensive career development opportunities – including employability skills training, award-winning mentoring programmes, and business and freelance start-up support for aspiring entrepreneurs.

And while helping you to succeed academically and professionally, we offer a comprehensive range of support services, sports facilities and social clubs to help you maintain your wellbeing, build networks and make lasting friendships.

As you can see from our postgraduate prospectus, Westminster students go on to do extraordinary things – thriving professionally and contributing to society, locally and internationally. Whatever your goal or aspiration, we will help you achieve it.

Together let’s make it happen.



Dr Peter Bonfield OBE FEng  
Vice-Chancellor and President



**“Become part of our vibrant and supportive community, where you can bring your whole self.”**



# LONDON, HOME TO OPPORTUNITY AND DISCOVERY



**EMPLOYMENT**



**CULTURE**

London is a city founded on ambition and one of the best cities in the world to be a student, according to QS Best Student Cities 2023 Ranking. It offers outstanding career opportunities and provides a warm welcome to thousands of international students.

This vibrant, exciting city has been our home since 1838.



**PARKS AND GREEN SPACES**



# LONDON, WHERE LEARNING COMES TO LIFE

Thanks to our central London locations you will be fully immersed in the city's culture and business community. Our courses are developed in collaboration with industry and enriched by events, visits, live projects and guest speakers. We work with leading institutions such as Tate Britain and the British Film Institute to give you a vibrant, inspirational learning experience.

**WORLD LEADING  
FINANCIAL CENTRE**

**TOP MUSEUMS INCLUDING  
THE BRITISH MUSEUM**

**THE NATIONAL ARCHIVES**

**LONDON FASHION WEEK**

Source: Greater London Authority 2023  
[london.gov.uk/programmes-strategies](https://london.gov.uk/programmes-strategies)



# OUR AND FACILITIES

Three of our campuses are in the heart of the city and our Harrow Campus in north-west London is only 25 minutes by Tube from central London.

- Our innovative learning and lecture spaces include:
- Purpose-built art, design, photography, film and TV studios
  - Our historic Regent Street Cinema
  - World-class audio recording studios
  - State-of-the-art scientific laboratories
  - Dedicated, modern architecture studios

We are also one of the few universities in the UK to have two on-campus Bloomberg Financial Markets Suites and the cutting-edge Fabrication Laboratory that offers a range of 3D printers and laser cutters.

When you are ready to relax there are cafes and coffee shops, gyms, a sports ground, prayer and quiet rooms. The University of Westminster Student Union organises everything from club nights to sports, networking and social events for you to get involved and meet new friends.



**REGENT CAMPUS**



**CAVENDISH CAMPUS**



**HARROW CAMPUS**



**MARYLEBONE CAMPUS**





# A PLACE FOR YOU TO LEARN

Our excellent libraries are home to an extensive collection of books, journals and e-resources. You will also find that they are convenient places to study in Harrow and in the centre of London.

Our specialist team works with academic colleagues to develop physical and online collections to meet your study and research needs, and will support you to develop research, referencing, academic writing and study skills. Support is provided through one-to-one sessions, focused group sessions and dedicated sessions on specific topics based on your needs.

## We also offer:

- extensive written resources and pre-recorded videos to access in your own time
- extended opening hours and the ability to book study spaces for individual and group work
- IT software and equipment, including Windows laptops and MacBooks, for students' use.

The University has its own archival collections, including the renowned Westminster Menswear Archive, and our team will provide support in using these resources and the many other archives available across the city.





# A WELCOMING AND SUPPORTIVE COMMUNITY

Whatever your goal, you will find a warm welcome and all the support you need to grow academically and professionally.

“My time at the University of Westminster was amazing and welcoming. During my course, I learnt a lot about the music industry and made new connections, which was especially great because I was new to the UK and didn’t know many people in the industry before coming here.

The University is really inclusive and makes students from different backgrounds feel accepted. This gave me the freedom to fully engage in the course and absorb all the knowledge and experiences it had to offer. I’m extremely grateful to my lecturers, especially Sally Anne Gross, who went above and beyond to support my career journey. She recommended job opportunities that matched my passion for the music industry and gave me personal advice to ensure my success in those roles.

Thanks to her guidance, I now have a job that allows me to pursue my passion, and I’m thriving in the industry I care so much about.”

**MOSES JOHNSON**  
Project/Business Development Manager  
at Marathon Music Group, studied  
Music Business Management MA, 2022



**DEV JYOTI**  
Ecommerce professional,  
studied Management MA, 2023

“My experience at Westminster has been truly life-changing. As soon as I arrived in London, I instantly felt a connection with the vibrant city and knew that studying here would be a dream come true. When I visited the UK in 2018, I caught a glimpse of the University from across the road. Its location in central London, right across from Madame Tussauds, sparked something within me and planted the seed of a future aspiration to pursue a Masters degree there. The memory of that moment stayed with me and played a big role in my decision to choose the University when the time came.

From the moment I set foot on campus, I felt welcomed and encouraged to explore

my intellectual curiosity. The staff members are dedicated and the courses offered are diverse, expanding my horizons and challenging me to think critically. Westminster’s focus on practical learning has given me the skills and knowledge I need to confidently navigate the professional world. The University’s extensive resources, including comprehensive student support services, have been invaluable in nurturing my personal and academic growth.”

HEAR MORE FROM OUR ALUMNI AT:  
[YOUTUBE.COM/@UNIOFWESTMINSTER](https://www.youtube.com/@uniofwestminster)





# TURNING AMBITION INTO REALITY

**We have close links with industry and professional organisations in London, across the UK and all over the world, providing you with plenty of opportunities to meet employers and kick-start your career.**

#### **Practical career support**

Over 25 professional bodies offer accreditation, approval or recognition of our courses, or membership for our graduates. These connections help us attract high-quality guest speakers and lecturers, providing you with great opportunities to learn from and connect with potential employers.

#### **Careers and Employability Service**

With an ever-expanding network of around 3,000 employers, we provide exceptional careers support and guidance for up to three years after graduating.

Our Careers Consultants and Placement teams offer one-to-one appointments to support your career goals, helping you understand your personal skills and experiences and how they relate to the labour market. You can receive interview coaching and get feedback on CVs and applications. And you can access face-to-face and online networking opportunities, careers fairs and industry-specific events.

#### **Future Ready Mentoring**

You can apply to be matched with an industry professional for a long- or short-term mentoring relationship through our highly acclaimed Future Ready Mentoring programme. Our mentors can help you to accelerate your personal and professional growth by sharing insights, assisting with developing your skill set, exploring different career pathways and supporting you to grow your network.

#### **Work Experience and Placement**

Depending on your subject, you may have the option to take a placement as part of your course, or as an extracurricular activity. We provide support and a dedicated careers management system - Engage - to help you find work experience, internships and part-time job opportunities.

**“My mentor was a BBC journalist. Thanks to him I learnt so much about the media and journalism in the UK.”**

**QUYEN DAO**  
Data, Culture and Society MA



# LET'S MAKE IT HAPPEN



“I was hesitant about returning to university as a mature student with a demanding job and being a mother. But when I attended the open evening at Westminster, Dr Keith, the course leader, immediately put me at ease. She acknowledged my busy schedules and assured me that we would find a way to make it work.

Throughout the programme, I received incredible support and encouragement. It was the best two years of my life, pursuing my dream and conducting research in Africa. My experience at Westminster was culturally diverse, supportive, challenging, and academically stimulating. Dr Keith is an amazing teacher who goes above and beyond for her students, helping us make a difference in the world.”

## **AYANNA DEANE**

Project Officer at School Food Matters,  
studied Global Public Health Nutrition MSc, 2019



## **SARATH NAIR**

Business Analyst in banking,  
studied Finance (Banking) MSc, 2021

“Growing up in a small village in Kerala, India, there were pressures on me to become successful. People expected me to keep my steady job, which supported my retired parents, and settle down at a suitable age. But I didn’t want to let these challenges stop me from taking a big risk to chase my dreams. So I decided to fulfil my childhood dream and study in the vibrant city of London.

Moving to London brought a wave of new experiences. Everything was different – a new country, new classmates, new friends, new culture, and a new way of learning. It was overwhelming, but I held on to my belief that strong relationships and connections can bring people together. This belief guided me when I became the class representative. I created WhatsApp groups to help students connect and

support each other in the challenging times of the global pandemic. Together, we made sure that learning continued despite the difficulties. The support of the faculty at the University of Westminster and the resilience of the students played a crucial role in this success.

Standing on the stage during the graduation ceremony was a moment I’ll never forget. I was proud to receive the Westminster Business School prize for the ‘Outstanding Student in Finance Banking’ award. All the risks, hard work, and effort I put in felt completely worth it. It was a validation of my dreams, not only for me but also for my loved ones who were cheering me on virtually during the graduation. Thanks to the University of Westminster, I am now on a path to create a better life for myself and, most importantly, for my parents.”

HEAR MORE FROM OUR ALUMNI AT:  
[YOUTUBE.COM/@UNIOFWESTMINSTER](https://www.youtube.com/@uniofwestminster)



# EDUCATION TO FIT AROUND YOU

**Our high-quality teaching is informed by our internationally recognised research and underpinned by our close links to industry and professional bodies.**

Our goal is to provide a transformative learning experience for students from every background. We want to help you to develop into a resilient and expert graduate who responds flexibly and contributes positively in an unknown global future.

We are committed to teaching in a way that is practical, problem-focused and socially engaged. We aim to provide personalised learning and flexibility for students, and to embed critical thinking, employability, enterprise and digital competence in our courses.

Working in partnership with students, employers and the broader community, we remove barriers to success by championing inclusivity and accessibility.

## **Find a course structure that works for you:**

### **Full-time study**

Courses start in either September or January. You will probably attend the University for lectures or seminars at least two days a week during the teaching year (31 weeks). Each course is assessed differently but is likely to include coursework and an extended project or dissertation.

### **Part-time study**

There are part-time routes in most subjects, which offer daytime or evening study or, in some cases, a mixture of both. A part-time degree normally takes at least two years, attending two sessions each week of the academic year, with a further six to twelve hours each week of personal study. Some employers will enable you to study by day release from work.

Please note that part-time study is not available for students requiring a student visa.

### **Online courses ONLINE**

Teaching English to Speakers of Other Languages (TESOL) MA and Management MA offer an immersive and interactive online learning experience, with on-demand access to course content and resources to fit learning around your schedule. You will be exposed to a variety of teaching methods such as videos, and discussion boards and live online sessions where you can ask questions and connect with peers to share your experiences.

### **With professional experience**

Some courses offer the option of an integrated work placement or internship either in the UK or abroad. These full-time degrees are delivered over two years.

### **Modular scheme**

Our Masters degree courses are modular study schemes based on a system of accumulating credits. You can transfer credits you have gained to other courses or institutions. And every course combines modules which, as you complete them, bring you closer to gaining your higher degree.

### **Intensive block study**

A few Masters courses are offered in short, intensive study periods of one to four weeks. They are full-time and may include weekend and weekday study. They are often followed by 12 weeks of personal study. Single postgraduate modules can sometimes be studied in this way.

We also offer LLM, MBA, MFA, MArch, MRes and Apprenticeship degrees. Please refer to our website for full details.





# WORKING WITH OUR BUSINESS COMMUNITY

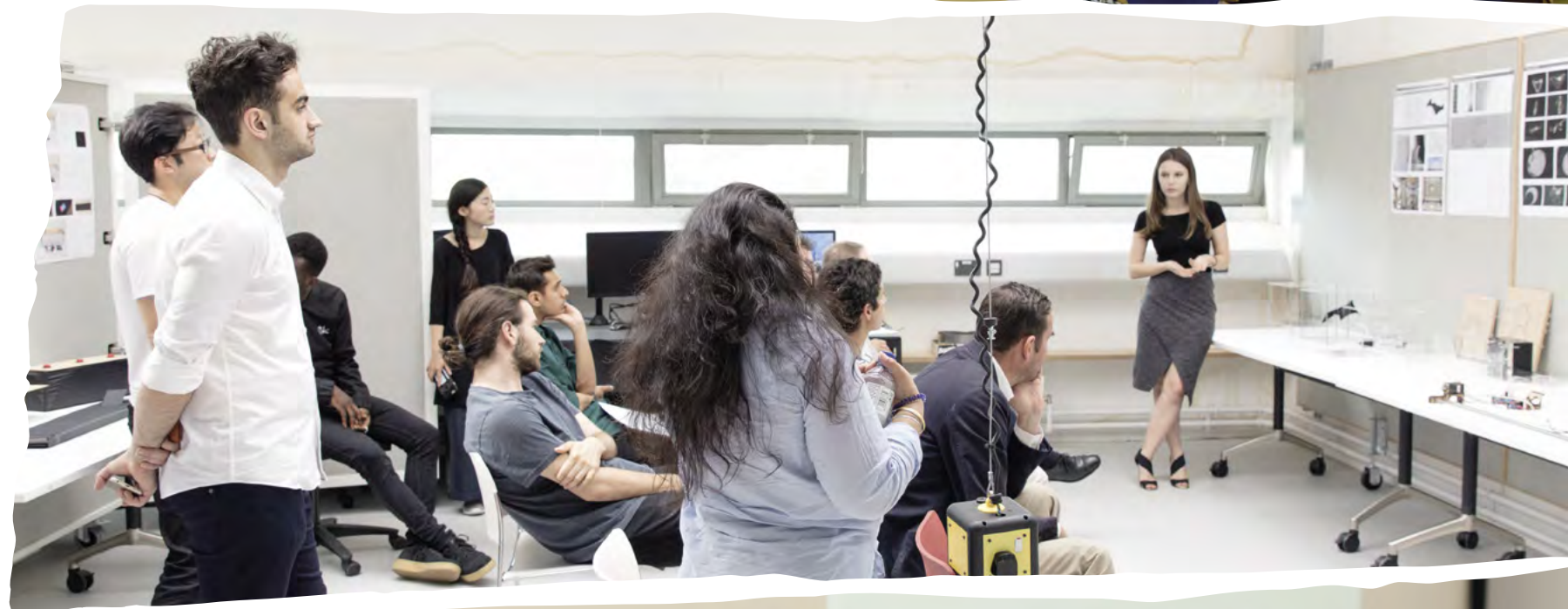
**The University of Westminster has strong ties to London's business community which provide our students with opportunities to work with organisations that shape the city.**

Our close relationships with employers and leading businesses ensure that our courses give you the skills and experience employers need. Many courses are professionally accredited. Our courses feature industry guest speakers, visits to organisations both in the UK and abroad and the chance to respond to live briefs set by businesses. You will also have opportunities to build a lasting professional network to enhance your career prospects through our mentoring programme and engagement with our global alumni community.

If you are interested in working freelance or starting a business, we invite you to join the Westminster Enterprise Network (WeNetwork), a vibrant, engaged community of colleagues, students and recent graduates, who can help nurture your passion for entrepreneurship.

Our academics collaborate with businesses to deliver cutting-edge research and innovation projects to drive businesses forward. We also work with organisations to provide customised training programmes, so staff keep learning and developing their skills beyond their formal education.

Visit [westminster.ac.uk/business-services/student-testimonials](https://www.westminster.ac.uk/business-services/student-testimonials) to hear more from our students about their experiences of working with our local business community.





# SUPPORTING YOU TO SUCCEED

We are proud of our diverse student body and the energy and creativity it brings. Whether you are an international student or have not studied for some time, our staff are here to support you to succeed at every step.

## CAREERS AND EMPLOYABILITY SUPPORT

The Careers and Employability Service offers help and support for up to three years after graduation. It provides advice on career development and help to find job and volunteering opportunities.



## LEARNING SUPPORT

Every student is allocated a personal tutor, who can support any aspect of your studies, with additional support available if you have specific learning needs. A range of practical courses and tutorials on academic study skills are available both online and in person. You can apply to be part of an active mentoring programme.



## DISABILITY SUPPORT

The Disability Learning Support Service supports you if you have disabilities, specific learning difficulties or conditions that may affect your studies. Specialist advisers can provide advice on access, technology and support adjustments for coursework, assessments and exams.



## WELLBEING AND HEALTH SERVICES



Wellbeing advisers are available to help with removing barriers to positive wellbeing and can assist you in accessing specialist support.

You have access to external NHS support services including General Practitioners (GPs), and mental and sexual health services.

## ACCOMMODATION



For help and advice on the different types of accommodation available, visit: [westminster.ac.uk/accommodation](https://westminster.ac.uk/accommodation)

**“Thank goodness for the support assistant in the research methods labs to help build my confidence with my quantitative skills. There was no judgement, just support at my pace. I got a distinction for the module in the end!”**

**ANJALEE CHAKRAVARTY-AGBO**  
Health Psychology MSc



## WESTMINSTER ENTERPRISE NETWORK

Join our vibrant community of aspiring founders, freelancers and individuals eager to develop their enterprise skills: access funding opportunities, networking events, and transformative programmes. Unlock your potential, embrace entrepreneurship and create your own path to success with WeNetwork!!



## WESTMINSTER ALUMNI

When you graduate you will be part of the thriving alumni community, with members in 180 countries across the world. Westminster alumni enjoy many benefits, including discount on further study, and invitations to networking and social events.



# WELCOME TO THE WORLD



**We offer a very warm welcome to students from 160 different countries. Wherever you come from, you will find a distinctly British learning experience within a truly international environment.**

## **Support for international students**

If you are joining us from overseas, we have plenty of experience in helping and supporting you to make the most of your time with us. You'll find extra dedicated support to help you feel at home, including:

- information about enrolment and student support services
- pre-departure webinars and face-to-face briefings in several countries and online advice on immigration and visas
- support and advice on securing a place in University halls of residence or alternative accommodation in London
- welcome sessions for international students, which give you the chance to meet and network with other international students as well as our staff
- student societies dedicated to diverse national groups and interests
- specialist careers support, including careers fairs, work experience, volunteering and mentoring opportunities.

We also offer a wide range of additional courses to support you before you arrive and during your studies, including training and study skills, academic English, and a range of pre-sessional English courses for both September and January intakes. To find out more, visit:

[westminster.ac.uk/international/english-language-support](https://westminster.ac.uk/international/english-language-support)

## **Pre-Masters courses**

We work in partnership with Kaplan International Pathways to provide preparatory courses for international students who do not meet the entry requirements for a range of our Masters programmes. These courses are designed to meet the needs of international students. They will allow you to build your academic skills and subject knowledge, and raise your English language to the level required for postgraduate study.

Upon successful completion of your course at the required level, you will be guaranteed a place on your chosen postgraduate degree.

You can study the following courses at Kaplan International College London:

- Pre-Masters for Business, Law and Social Sciences
- Pre-Masters for Science and Engineering.

To find out more and apply, visit:

[kaplanpathways.com/universities/university-of-westminster](https://kaplanpathways.com/universities/university-of-westminster)

We also work with other academic institutions offering Pre-Masters qualifications. For more information, visit:

[westminster.ac.uk/international/university-preparation-courses](https://westminster.ac.uk/international/university-preparation-courses)



**We are ranked 2nd in the UK and 23rd in the world for International Students according to the Times Higher Education Young University Rankings 2022**

## **Semester Postgraduate Study Abroad Programme**

Join our semester Postgraduate Study Abroad Programme and choose from a range of modules, or combine your study with an internship. You can transfer these credits to your home degree and embed an international experience into your studies. This can enhance your global learning and future employability. For more information on all the opportunities open to you, and to read student reflections on their Study Abroad experience, visit: [westminster.ac.uk/study-abroad](https://westminster.ac.uk/study-abroad)



# RESEARCH WITH IMPACT

**Building on our pioneering past, colleagues and students come together in our research and knowledge exchange endeavours to find solutions to make a difference for our communities and for the world.**

We engage with government, businesses, the public and local communities, disseminating and applying knowledge through collaborating with partners both nationally and internationally.

Our four university-wide research communities focus on building knowledge and sparking change in some of the most important areas of human activity. These communities are:

- Arts, Communication and Culture
- Diversity and Inclusion
- Health Innovation and Wellbeing
- Sustainable Cities and the Urban Environment

Our innovative research is recognised as world-leading, both inside and outside academia – 72 per cent of our research has been deemed to be world-leading (4\*) or internationally excellent (3\*) according to the 2021 Research Excellence Framework (REF).

**Research impact measures the benefit we deliver to society. Our research delivered high impact nationwide in the following subject areas:**

- **Art and Design**
- **Business and Management**
- **Politics and International Studies**

Source: Research Excellence Framework (REF) 2021

To discover more, visit: [westminster.ac.uk/research](https://westminster.ac.uk/research)



# THE GRADUATE SCHOOL

As a postgraduate researcher at Westminster, you will belong to an academic school and research group. But you will also be a member of a much wider community of researchers through our Graduate School – a vibrant, high-quality, inspiring and globally engaged research environment.

Developing the next generation of researchers is a key priority for the University, and our Graduate School is vital to this aim. The School is a thriving home for our post graduate researchers and provides a vibrant researcher development programme benchmarked to national and international standards.

Through the Graduate School, you can become highly regarded in your field of expertise, both nationally and internationally, and enhance your future professional life and career development.

We will support your development into a confident, highly skilled and well-rounded researcher through:

- a series of tailor-made workshops and specialist skills sessions – the Doctoral Researcher Development Programme
- developing connections with subject-leading research experts and dedicated professional service support staff.

Our students have an excellent experience. Overall satisfaction was 83% in the most recent Postgraduate Research Experience Survey (PRES)\* 2022, demonstrating our commitment to helping you succeed in your doctoral research.

For more information, visit [westminster.ac.uk/research-degrees](https://westminster.ac.uk/research-degrees)



**Ranked in the top 20 of UK universities in the latest PRES\***



# WE MADE IT HAPPEN

Meet more of our students, who have gone on to do extraordinary things. We are here to help everyone realise their potential.

“Schparkly Creative is a branding, design, and marketing studio that specialises in supporting sustainable start-ups and scale-ups in the marketplace. My partner and I founded the studio because we noticed that many companies doing good in the world often go unnoticed.

Our journey began when we moved to London with the intention of continuing our work in marketing and design for transformative companies. However, the unforeseen challenges of the pandemic left us without jobs and facing financial strain. To make ends meet, we started freelancing and discovered that we enjoyed working together on projects. We realised that operating as a

nimble and small studio allowed us to serve our clients better and more affordably than larger agencies.

The University of Westminster and the WeNetwork played a pivotal role in our success. The University provided us with top-notch education, and we also participated in an accelerator programme organised by the WeNetwork. This programme helped us navigate the intricacies of running a business in a new country, providing guidance and support. Currently, we are part of the Elevate programme, which equips us with the tools to transition from a small business to a more secure and profitable model.

We are immensely grateful for the University of Westminster’s support during a time when we needed it most. Their assistance has been instrumental in our journey, and we appreciate the numerous opportunities they have provided us.”

**MARC FEGARSKY**  
Founder at Schparkly Creative,  
studied Marketing Communications MA



“I took a big leap in my career after working as an innovation manager for Canon for over 12 years. In 2016, I decided to follow my passions for health and fitness and started my own company called IronManager Ltd. My goal was to transform online coaching and help people live healthier lives through sports and sustainable diets. I even created a Fitness and Nutrition app to connect with clients around the world.

To become an expert in sport performance nutrition, I joined the MSc in Sport and Exercise Nutrition program at the University of Westminster. The program gave me the knowledge and skills I needed to grow my business. Despite most of the course being online due to the pandemic, I still learned a lot.

The support from my lecturers and mentors at Westminster was amazing. They fuelled my passion for this field, and the practical experiences in the laboratory were really valuable. I focused my Masters thesis on improving my app based on user feedback.

Westminster also helped me develop my business further. I attended workshops and bootcamps through the Westminster Enterprise Network, which gave me new skills and connections. I even participated in



the Westminster Big Idea Competition and won second place in the Acceleration category.

IronManager Ltd is growing every year, and I plan to return to Westminster to find talented individuals to join my team. My experience at Westminster has been crucial in shaping my business, and I'm grateful for the support, knowledge and opportunities they provided.

You can visit our website at: [ironmanager.coach](https://ironmanager.coach). I'm excited about the future of IronManager Ltd and the positive impact we can make on people's lives.”

**FRANCESCO PIGNATTI**  
Founder at IronManager,  
studied Sport and Exercise Nutrition MSc





# FINANCIAL SUPPORT

A postgraduate degree is an investment in your future and can make a significant difference to your career prospects. Typically, postgraduates earn around 20 per cent more than those with an undergraduate degree. You will graduate with a professional network, lasting friendships from around the world and achieve more than you had ever thought possible.

There are several routes to help fund your degree.

## Postgraduate Masters loan

Student Finance England (SFE) offers Masters loans, which can be used to pay tuition fees or help meet your maintenance or study costs. For more information visit: [gov.uk/studentfinance](http://gov.uk/studentfinance)

## Scholarships

We offer a number of scholarships for UK and international students, studying on a full-time or part-time basis. For more information on fees and funding, visit: [westminster.ac.uk/fees-and-funding](http://westminster.ac.uk/fees-and-funding) and [westminster.ac.uk/scholarships](http://westminster.ac.uk/scholarships)

## Alumni tuition fee discount

Former students remain part of our global community and are eligible for a range of exclusive services and discounts including reduced tuition fees on postgraduate courses. For more information visit: [westminster.ac.uk/alumni-benefits](http://westminster.ac.uk/alumni-benefits)

## During your studies

As a student in London, you will be offered discounts, and there are many websites with money-saving tips and information on finding the best deals. Our Careers and Employability Service will help you find part-time work while you study, to help with your finances and earn valuable transferable skills.

We aim to keep costs as low as possible, for example for gym membership and some food options to help your money go further.





# OUR SUBJECT AREAS

The following section lists the courses we offer. Most courses are available full-time (FT) and some are available part-time (PT). For the most up-to-date information on the course structure, course modules, fees and entry requirements, visit: [westminster.ac.uk/study](http://westminster.ac.uk/study)

Accounting and Finance.....	34	Fashion.....	47
Architecture, Interiors and Urban Design.....	35	Film and Television.....	49
Art, Design and Visual Culture.....	37	Languages.....	50
Biological and Biomedical Sciences.....	39	Law.....	51
Business and Management.....	40	Marketing.....	52
Computer Science and Engineering.....	41	Media and Communication.....	53
Construction, Surveying and Real Estate.....	42	Music.....	54
Criminology.....	43	Nutrition and Public Health.....	55
Data Science and Informatics.....	44	Politics and International Relations.....	56
Economics.....	45	Psychology.....	57
English and Creative Writing.....	46	Tourism and Events Management.....	58
		Transport and Logistics.....	59



## ACCOUNTING AND FINANCE

The global financial services industry is increasingly technology led and is in a period of rapid digitisation. To meet this change, our innovative and challenging courses are developed in close collaboration with employers and professional bodies. Working with industry-leading organisations such as the CFA Institute, the Chartered Institute for Securities & Investment (CISI) and the Association of Chartered Certified Accountants (ACCA) helps us provide the distinctive skill set you need to meet the demands of tomorrow's job market. The University is a CFA University Affiliation Program Partner. Westminster Business School is recognised as a CISI Centre of Excellence.

Our courses are designed to enhance the value of a Masters academic qualification with professional skills. They draw on the teaching excellence and research expertise of our academic and professionally qualified staff. Additionally, we continue to invest in financial technology resources in our purpose-built Financial Markets Suite. It is widely used in leading financial institutions around the world – providing a state-of-the-art teaching and learning experience.

The skills and knowledge gained on our courses will open up a range of opportunities in different accounting and finance careers. These include management and financial accounting and reporting, auditing, stockbroking, private equity, finance and tax consultancy, FinTech, and investment and risk management.

Recent graduates have found employment at organisations including Amazon, Deloitte, Citibank, the Financial Conduct Authority, PricewaterhouseCoopers, Santander, Société Générale and the World Economic Forum.

**Campus for all courses:**  
Marylebone

**Finance (Banking / International Finance) MSc**  
Duration: 1 year FT  
Start: September  
*The Finance (Banking) MSc is accredited by the Chartered Banker Institute.*

**Finance and Accounting MSc**  
Duration: 1 year FT  
Start: September and January  
*This course is accredited by the Association of Chartered Certified Accountants (ACCA) and the Chartered Institute of Management Accountants. On completion of the course you may be exempt from multiple exam papers.*

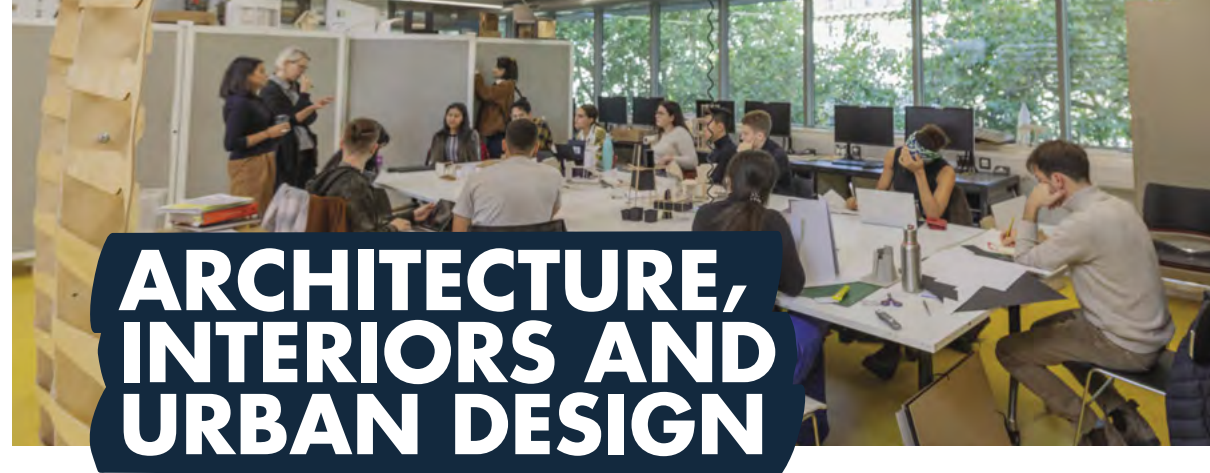
**FinTech with Business Analytics MSc**  
Duration: 1 year FT  
Start: September and January

**Investment and Risk Finance MSc**  
Duration: 1 year FT  
Start: September and January  
*This course is recognised by the Chartered Institute for Securities & Investment and CFA Institute University Affiliation Program.*

Professional bodies accrediting or recognising our courses include:







# ARCHITECTURE, INTERIORS AND URBAN DESIGN

Westminster is one of the largest providers of architecture, interiors and urban design education in the country. We offer specialist, experimental postgraduate education grounded in continually extending theoretical and technical knowledge. And we provide you with the chance to develop your ideas through creative and reflective approaches to your chosen discipline.

Our 110-metre-long, galleried, daylit architecture studios are situated on the upper levels of the Marylebone Campus, and provide a vibrant and innovative studio culture. And our Westminster Fabrication Laboratory combines the digital with the analogue to create some of the finest facilities of any school of architecture in central London.

Our strong links with leading professionals and future employers mean there are exciting networking opportunities and excellent employment prospects for our students. Recent graduates have found success within interior design, architectural design, the public sector and the construction industries.

**Campus for all courses:**  
Marylebone

**Architecture MA**  
Duration: 1 year FT / 2 years PT  
Start: September

**Architecture and Environmental Design MSc**  
Duration: 1 year FT / 2 years PT  
Start: September

**Architecture and Environmental Design Postgraduate Certificate**  
Duration: 1 year PT  
Start: September

**Architecture Postgraduate Diploma Professional Practice (RIBA pt III)**  
Duration: 1 year PT  
Start: September

**Energy and Environmental Design Postgraduate Certificate**  
Duration: 1 year PT  
Start: September

**Master of Architecture (MArch) (RIBA pt II)**  
Duration: 2 years FT  
Start: September  
The course is prescribed by the Architects Registration Board (ARB) and validated by the Royal Institute of British Architects (RIBA), providing exemption from the RIBA Part II examination.

**Interior Architecture MA**  
Duration: 1 year FT / 2 years PT  
Start: September

**International Planning and Sustainable Development MA (with pathways)**  
Duration: 1 year FT / 2 years PT  
Start: September  
Both course pathways have full RTPI accreditation as a 'Combined Planning Programme'.

**Urban Design MA**  
Duration: 1 year FT / 2 years PT  
Start: September  
This course is accredited by the RTPI as a Specialist Course.

**Urban Design Postgraduate Certificate**  
Duration: 1 year PT  
Start: September

**Urban Design Postgraduate Diploma**  
Duration: 1 year FT / 2 years PT  
Start: September

**Urban and Regional Planning MA**  
Duration: 1 year FT / 2 years PT  
Start: September  
This course is accredited by the RTPI as a 'Combined Degree Programme'. Students may join as student members and upon graduation become licentiates. Apprenticeship route available.



Student work clockwise from top-left, Jinglei Wang, Amritha Thomas, Poykan Tanataveetram, Shada Elmagri, Yu Sun



Professional bodies accrediting or recognising our courses include:







# ART, DESIGN AND VISUAL CULTURE

**Our postgraduate art and design portfolio offers a unique combination of professional practice, creative development, skills enhancement and contextual, specialist and interdisciplinary knowledge.**

Our courses have always reflected and influenced the state of the art – right back to 1839. The world’s first photography degree was delivered at our predecessor, the Regent Street Polytechnic.

We work with leading professionals and organisations to cultivate new talent and foster original, innovative thinking. You will be exposed to a rich mix of visiting speakers from across the creative sector and be able to draw upon the skills and expertise of lecturers, other students and links to London’s vibrant creative community.

Our graduates go on to a wide range of careers as artists, photographers, curators, designers, academics, writers, digital advertising executives, creative technologists, digital content producers and developers, game designers, new media producers and marketers, app developers and entrepreneurs.

**Art and Visual Culture MA**  
**Duration:** 1 year FT / 2 years PT  
**Start:** September and January  
**Campus:** Regent

**Creative Practice MRes**  
**Duration:** 1 year FT / 2 years PT  
**Start:** September  
**Campus:** Harrow

**Cultural and Critical Studies MA**  
**Duration:** 1 year FT / 2 years PT  
**Start:** September and January  
**Campus:** Regent

**Interactive Media Practice MA**  
**Duration:** 1 year FT / 2 years PT  
**Start:** September  
**Campus:** Harrow

**Museums, Galleries and Contemporary Culture MA**  
**Duration:** 1 year FT / 2 years PT  
**Start:** September and January  
**Campus:** Regent

*Modules on this course have been designed in partnership with museums and galleries including Tate and Museum of London.*

**Museums, Galleries and Contemporary Culture with Professional Experience MA**  
**Duration:** 2 years FT  
**Start:** September  
**Campus:** Regent

*Modules on this course have been designed in partnership with museums and galleries including Tate and Museum of London.*



# BIOLOGICAL AND BIOMEDICAL SCIENCES

At Westminster you will hone your practical and professional skills interacting with our academics who enjoy an international reputation for professional and research activities. With courses informed by our research and in collaboration with national and international institutions, you have the chance to experience the excitement of these fields first-hand, including opportunities to visit world leading flagship laboratories with state-of-the-art facilities.

We are proud of our contribution in biomedical sciences and have an active research culture. Our researchers are finding ways to help tackle cancer, liver disease, obesity, diabetes, and neurodegenerative and inflammatory diseases. Our biotechnology research is internationally admired, aiming to exploit biological resources for the development of bio-products and their use for environmental, medical and chemical/biochemical applications.

Graduates have gone on to a variety of careers including research or industry. Some graduates undertake PhD programmes or enter careers in research and development or commercial areas such as technical roles or sales in life science and healthcare companies. Those already working in research or healthcare laboratories have gained additional or translational skills, enhancing their current roles.

**Campus for all courses:**  
Cavendish

**Applied Biotechnology MSc**  
Duration: 1 year FT  
Start: September

**Biomedical Sciences MSc**  
Duration: 1 year FT / 2 years PT  
Start: September  
*The course is accredited by the Institute of Biomedical Science.*

**Biomedical Sciences (Cancer Biology) MSc**  
Duration: 1 year FT / 2 years PT  
Start: September  
*The course is accredited by the Institute of Biomedical Science.*

**Biomedical Sciences (Clinical Biochemistry) MSc**  
Duration: 1 year FT / 2 years PT  
Start: September  
*The course is accredited by the Institute of Biomedical Science.*

**Biomedical Sciences (Haematology) MSc**  
Duration: 1 year FT / 2 years PT  
Start: September  
*The course is accredited by the Institute of Biomedical Science.*

Professional bodies accrediting or recognising our courses include:



**Biomedical Sciences (Immunology) MSc**  
Duration: 1 year FT / 2 years PT  
Start: September  
*The course is accredited by the Institute of Biomedical Science.*

**Biomedical Sciences (Medical Microbiology) MSc**  
Duration: 1 year FT / 2 years PT  
Start: September  
*The course is accredited by the Institute of Biomedical Science.*

**Biomedical Sciences (Medical Molecular Biology) MSc**  
Duration: 1 year FT / 2 years PT  
Start: September  
*The course is accredited by the Institute of Biomedical Science.*

For full and most up-to-date information, see our website: [westminster.ac.uk/biological-and-biomedical-sciences](http://westminster.ac.uk/biological-and-biomedical-sciences) or scan the QR Code

# BUSINESS AND MANAGEMENT

Our graduates develop the relevant skills and mindset to respond proactively, creatively and responsibly to challenges in today's rapidly changing international business environment. Our innovative management programmes cover operational and strategic aspects, combining rigorous academic study with practical, evidence-based skills.

Each programme has been carefully designed to produce competent, creative and enterprising professionals with the expertise and confidence to build rewarding careers, while having a real impact where they work. You might want to develop your entrepreneurial skills, explore the latest project management techniques, analyse the environmental issues facing companies or manage organisational change. Whatever your business interest, we can support you.

Our team combines strong specialist business experience with the academic qualifications to teach all aspects of applied management, leadership and its associated specialist disciplines.

Our business courses will prepare you to become business leaders and entrepreneurs, or seek employment in SMEs and blue-chip companies in the public, private or third sector.

For Marketing courses see page 52.



We develop graduates with the skills and mindset to respond creatively and responsibly to a changing world

For full and most up-to-date information, see our website: [westminster.ac.uk/business-and-management](http://westminster.ac.uk/business-and-management) or scan the QR Code

**Campus for all courses:**  
Marylebone unless otherwise stated

**Business and Organisational Psychology MSc**  
Duration: 1 year FT / 2 years PT  
Start: September  
*This course is accredited by the Association for Business Psychology.*

**Digital Business MSc**  
Duration: 1 year FT  
Start: September

**Entrepreneurship, Innovation and Enterprise Development MSc**  
Duration: 1 year FT  
Start: September

**Human Resource Management MA**  
Duration: 1 year FT / 2 years PT  
Start: September and January  
*This course is accredited by the Chartered Institute of Personnel and Development.*

**International Business and Management MSc**  
Duration: 1 year FT  
Start: September and January

**International Development Management MSc**  
Duration: 1 year FT  
Start: September

Professional bodies accrediting or recognising our courses include:



**International Human Resource Management MA**  
Duration: 1 year FT  
Start: September  
*This course is accredited by the Chartered Institute of Personnel and Development.*

**Management MA**  
Duration: 1 year FT  
Start: September and January

**Management MA**  
Duration: 2 years PT  
Start: September  
**ONLINE**

**Master of Business Administration (MBA)**  
Duration: 1 year FT  
Start: September and January

**Project Management MSc**  
Duration: 1 year FT  
Start: September  
*This course is accredited by the Association of Project Management (APM) and the PMI Global Accreditation Center for Project Management Education Programs (GAC).*

**Sustainability Management and Innovation MSc**  
Duration: 1 year FT  
Start: September  
*This course is recognised by the Carbon Trust.*





# COMPUTER SCIENCE AND ENGINEERING

Our specialist postgraduate courses prepare you for the fast-moving, cutting-edge computer science and engineering industries.

The need for improved cyber security has never been greater as we increasingly rely upon computers for all aspects of our daily life. Our Cyber Security and Forensics course is informed by links to industry and supported by active in-house research. You can choose to specialise in cyber security or digital forensics and gain an understanding of the nature of the security threats that face computer systems, the type of information that is stored on digital devices and how it can be extracted. Graduates find employment as senior information security officers, in related cyber security roles or in more technical roles, investigating threats and safeguarding digital assets.

Our Software Engineering (Conversion) course aims to provide non-computing graduates with the core, leading-edge practical knowledge and skills that a professional software engineer requires to be successful in today's IT industry. This course provides you with essential practical experience of programming and applying software engineering to a number of new and important areas of IT and computing including mobile computing. It also helps you develop a strong grasp of the theory that underpins these practical skills.

For Data Science and Informatics courses see page 44.

**Campus for all courses:**  
Cavendish

## Cyber Security and Forensics MSc

**Duration:** 1 year FT / 2 years PT  
**Start:** September and January  
Accreditation for this course by the BCS is pending approval. Please check our website for the latest course information.

*This programme is also fully certified by the National Cyber Security Centre (NCSC), which is a sign of national excellence. Students will receive a certificate upon graduation. The NCSC is part of the UK Government's national communications intelligence agency GCHQ.*

Professional bodies accrediting or recognising our courses include:



## Software Engineering (Conversion) MSc

**Duration:** 1 year FT / 2 years PT  
**Start:** September



# CONSTRUCTION, SURVEYING AND REAL ESTATE

Our professionally accredited real estate and construction portfolio provides you with the skills to succeed in a workplace focused on the technological and managerial processes associated with the development, post-construction, appraisal and management of buildings.

We have excellent connections with our accrediting professional bodies and the industry. All our courses are professionally accredited by the Royal Institution of Chartered Surveyors (RICS) and/or Chartered Institute of Building (CIOB). Highly regarded by students and employers both within the UK and internationally, our courses are informed by the latest developments in practice and research.

Our graduates have excellent career prospects. Alumni have gone on to senior roles in a range of real estate and consultancy businesses and financial institutions. Recent graduates have found employment at CBRE, Mace, Barratt Developments, Savills, Carter Jonas and Grainger.

**Campus for all courses:**  
Marylebone

## Construction Project Management MSc

**Duration:** 1 year FT  
**Start:** September

*This course is accredited by the Royal Institution of Chartered Surveyors and the Chartered Institute of Building. Apprenticeship route available.*

## Real Estate Development MSc

**Duration:** 1 year FT  
**Start:** September

*This course is accredited by the Royal Institution of Chartered Surveyors. Apprenticeship route available.*

Professional bodies accrediting or recognising our courses include:







# CRIMINOLOGY

Our Criminology teaching team is at the cutting edge of developments in critical and international criminology, and provides an inclusive learning environment for students from all backgrounds. You will benefit from our strong links with London-based non-governmental organisations and prisons, providing a unique insight into the field.

Our Global Criminology course is designed to develop your knowledge and critical understanding of criminology as an interdisciplinary subject that incorporates legal, political, psychological and social scientific approaches to the study of crime, deviance, and criminal and social justice.

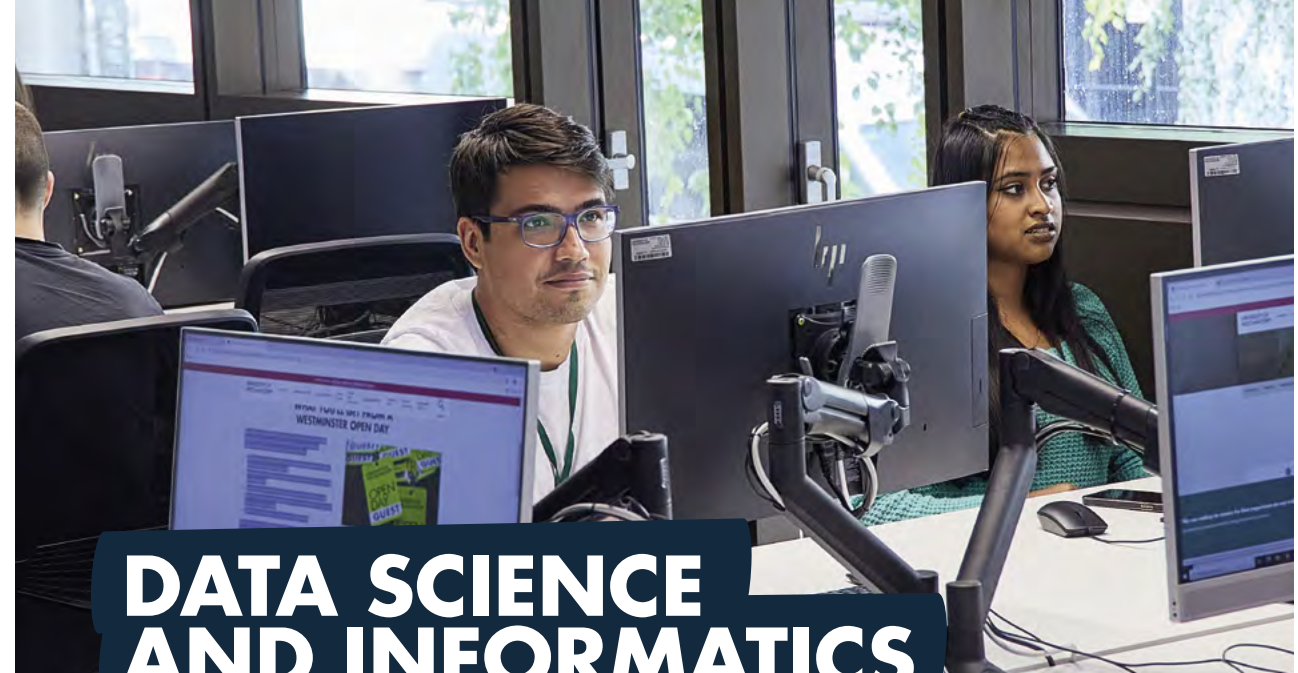
It will prepare you for a broad range of national and international career opportunities in the fields of criminal justice, human rights, victim and offender support, research, policing, and the probation and prison services. The academic knowledge and research skills gained by completing the course also put you in a strong position to undertake further research, such as a PhD.

**“This course provides a unique opportunity to study and research in collaboration with people in prison.”**

**ELLA WALSH**  
Global Criminology MA

**Global Criminology MA**  
Duration: 1 year FT / 2 years PT  
Start: September  
Campus: Regent

For full and most up-to-date information, see our website:  
[westminster.ac.uk/criminology](http://westminster.ac.uk/criminology)  
or scan the QR Code



# DATA SCIENCE AND INFORMATICS

Our courses can transform you into a professional data scientist, architect or analyst who understands business challenges, and has the ability to conceive, develop and manage solutions that today’s data-centric businesses need. By examining issues such as security, privacy and ethics in information systems, you will enhance your understanding of society’s use of information systems.

The Data Science and Analytics course addresses the need to propel information gathering and exploit potential knowledge hidden in increasing amounts of routinely collected data. You will learn techniques and tools in areas such as machine learning, advanced analytics and statistics.

The Big Data Technologies course covers applications of Big Data and technologies employed to underpin these applications, focusing on database management systems and data warehousing.

All our Masters teaching is informed by links to industry and is supported by research conducted by in-house research teams active in areas such as data science and analytics, health and social care modelling, computational intelligence, parallel computing, distributed and intelligent systems, and semantic computing.

Our courses are accredited by the BCS, The Chartered Institute for IT, for partially meeting the educational requirement for Chartered IT Professional (CITP) and Chartered Engineer (CEng).

For full and most up-to-date information, see our website:  
[westminster.ac.uk/data-science-and-informatics](http://westminster.ac.uk/data-science-and-informatics)  
or scan the QR Code

**Campus for all courses:**  
Cavendish

**Big Data Technologies MSc**  
Duration: 1 year FT / 2 years PT  
Start: September and January  
Accreditation for this course by the BCS is pending approval. Please check our website for the latest course information.

**Data Science and Analytics MSc**  
Duration: 1 year FT / 2 years PT  
Start: September and January  
Accreditation for this course by the BCS is pending approval. Please check our website for the latest course information.

**“I really enjoyed working with my classmates. They came from such a wide variety of backgrounds and industries.”**

**GABRIEL AVERIA**  
Data Science and Analytics MSc,  
formerly known as Business Intelligence  
and Analytics MSc

Professional bodies accrediting or recognising our courses include:







# ECONOMICS

Studying economics enables you to understand the key global issues of the day. It provides the tools and techniques for individuals, businesses and governments to analyse and interpret the issues and problems they face.

With a strong research profile, we are particularly respected in the areas of applied research in labour and education economics. Other areas of research strength include macroeconomics, financial econometrics, international economics and development economics.

We pride ourselves on inclusive and innovative approaches to student learning and research-informed teaching. You will gain an in-depth knowledge of the latest theories, practices and key concepts in economics, and will develop the practical skills needed by a working economist.

There are growing opportunities for graduates with a practically focused knowledge of economics to develop careers as professional economists, managers, business analysts or consultants in private, public and third sector organisations.

The skills and knowledge gained with us will open up a range of opportunities to build a career in government or consultancies, as economic analysts, regulatory economists and market analysts. Previous graduates have found employment at organisations such as the International Monetary Fund, Rio de Janeiro Mayor's Office, Shelter (UK housing charity) and the UK Government Economic Service, including Ofcom and Ofgem.

For Global Development MA see page 56.

## Economic Policy and Analysis MSc

Duration: 1 year FT

Start: September

Campus: Marylebone



We have strong links with the Government Economic Service and the Society of Professional Economists



# ENGLISH AND CREATIVE WRITING

As a dynamic institution, we offer a thought-provoking and productive environment in which to work and study. Our lively postgraduate and research culture embraces a range of different subject areas, critical approaches and professional practices.

Our diversity is our strength. There is always a stimulating interchange of ideas within and across the different fields, and a wonderful range of expertise available among our staff, comprising well-known academics, writers, curators and artists.

Based in the heart of London, we have strong collaborative relationships with cultural institutions in the UK, such as Tate and the Museum of London, as well as abroad with the Smithsonian Institution, Washington, D.C.

All our MA and PhD programmes are intellectually ambitious – we want to inspire you to develop, whether you are starting, building or changing your career. Work placements are available on all courses, giving you professional experience, enhancing your employability and helping to build your connections. Graduates are well equipped for a variety of roles, including as content writers, editors, journalists, publishing professionals or teachers.

**Campus for all courses:**  
Regent unless otherwise stated

**Creative Writing: Writing the City MA**  
Duration: 1 year FT / 2 years PT  
Start: September and January

**Cultural and Critical Studies MA**  
Duration: 1 year FT / 2 years PT  
Start: September and January

**English Language and Linguistics MA**  
Duration: 1 year FT / 2 years PT  
Start: September and January

**English Language and Literature MA**  
Duration: 1 year FT / 2 years PT  
Start: September and January

**English Literature: Modern and Contemporary Fictions MA**  
Duration: 1 year FT / 2 years PT  
Start: September and January

**Professional Writing MA**  
Duration: 1 year FT / 2 years PT  
Start: September and January

**Professional Writing with Extended Work Placement MA**  
Duration: 2 years FT  
Start: September

**Teaching English to Speakers of Other Languages (TESOL) MA**  
Duration: 1 year FT / 2 years PT  
Start: September and January

**Teaching English to Speakers of Other Languages (TESOL) MA**  
Duration: 1 year FT  
Start: September

**ONLINE**

**“The lecturers are excellent with a wealth of subject knowledge that inspires confidence.”**

**MONIKA WOKO**  
English Literature: Modern and Contemporary Fictions MA





# FASHION

Westminster has a world-class reputation for producing highly creative fashion professionals. To maintain this position, we continue to develop innovative courses devoted to training the next generation of creative industry leaders, entrepreneurs and designers, while simultaneously cultivating their critical understanding of the fields in which they work.

A unique draw is the Westminster Menswear Archive, which consists of over 1,500 garments from world-renowned menswear designers like Alexander McQueen, Massimo Osti, Craig Green, Stone Island, Carol Christian Poell, Jean Paul Gaultier, Kim Jones, Maison Margiela and Vexed Generation. This exceptional resource allows students, researchers and industry professionals to study examples of menswear design covering military uniforms, industrial garments, and the designer outcomes from a technical and functional point of view.

Our alumni include London Fashion Week designers Roberta Einer, Claire Barrow, Liam Hodges and Ashley Williams; Stuart Vevers, Creative Director of Coach; and former President and Chief Creative Officer of Burberry, Christopher Bailey.

**Campus for all courses:** Harrow

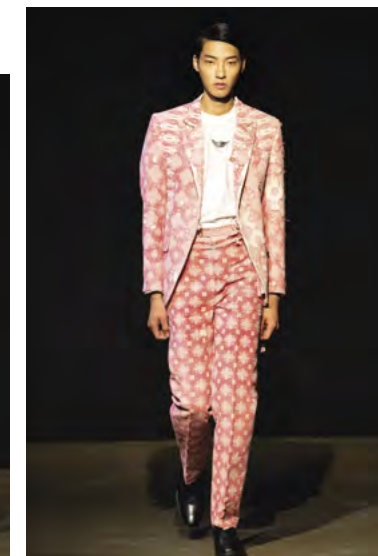
**Fashion Business Management MA**  
Duration: 1 year FT  
Start: September

**Menswear MA**  
Duration: 1 year FT  
Start: September

**Menswear with Professional Experience MFA**  
Duration: 2 years FT  
Start: September



Student work clockwise from top-right, Daniel Rozsahegyi, Amelie Marie Gaydoul, Daniel Rozsahegyi, Amelie Marie Gaydoul, Curtis Wu, James Reeves







# FILM AND TELEVISION

We offer two distinct and highly sought-after postgraduate courses in Film and Television, which provide prospective students with different and exciting routes to further their careers in these competitive industries.

Our Business of Film MA aims to equip students with essential knowledge and skills in the film industry and is delivered in partnership with the BFI (British Film Institute) and Regent Street Cinema. The programme will prepare you for the challenges faced by the film sector today, build your industry contacts, and extend your entrepreneurial skills and commercial acumen. The course embraces creative problem solving in tandem with business and negotiation skills.

Part of our dedicated Screen portfolio, the Film, Television and Moving Image MA course offers a unique combination of theoretical and creative insights underpinned by contextual, specialist and interdisciplinary knowledge. Taught by leading academics, you will develop key skills for communicating about and with moving images across a range of contexts and platforms.

Both courses are offered through full- and part-time study modes, providing increased flexibility to those who may already be working in industry, or are seeking to develop their skills.

## Film, Television and Moving Image MA

**Duration:** 1 year FT / 2 years PT  
**Start:** September  
**Campus:** Harrow

## Business of Film MA

**Duration:** 1 year FT / 2 years PT  
**Start:** September  
**Campus:** Regent

*Delivered with our industry partners the BFI (British Film Institute) and Regent Street Cinema, this course allows students to access guest speakers, networking and select industry placement opportunities.*



Image credit: Darren Brade



**Our Business of Film MA is delivered in partnership with the BFI (British Film Institute) and Regent Street Cinema**

For full and most up-to-date information, see our website: [westminster.ac.uk/film-and-television](http://westminster.ac.uk/film-and-television) or scan the QR Code



# LANGUAGES

In an increasingly global world, our rich portfolio of postgraduate courses seeks to meet the demand for interpersonal and intercultural communication across different languages. Through applied and professional languages, our focus is on languages being both explored and employed.

Our postgraduate courses are delivered by highly skilled professionals. Their practice-led approach is complemented by theory-informed lectures and seminars, taught by academics who are active researchers in the fields of translation studies, linguistics, intercultural communication and language pedagogy.

Our Specialised Translation and Translation and Interpreting courses focus on professional skills, leading directly into careers in the translation and interpreting industry.

The Teaching English to Speakers of Other Languages (TESOL) course provides advanced training in TESOL, with the option to additionally enrol at a CELTA course near the University. The International Liaison and Communication course focuses on liaison, negotiation and intercultural communication.

**Campus for all courses:**  
Regent unless otherwise stated

## International Communication: Liaison and Advocacy MA

**Duration:** 1 year FT / 2 years PT  
**Start:** September and January  
*The University of Westminster is a Higher Education Language partner of the Chartered Institute of Linguists.*

## Specialised Translation MA

**Duration:** 1 year FT / 2 years PT  
**Start:** September  
*The University of Westminster is a Higher Education Language partner of the Chartered Institute of Linguists, member of the Institute of Translation and Interpreting, the Conférence Internationale permanente d'Instituts Universitaires de Traducteurs et Interprètes, the Association of Programmes in Translation and Interpreting Studies, UK and Ireland, Elia Exchange, and the UN MoU Network.*

**"I dreamt of becoming a freelance translator or interpreter but through this course, I discovered that I was well equipped for other roles too, like project management."**

**LUCIO BAGNULO**  
Translation and Interpreting MA, now Head of Translation & Language Strategy at Amnesty International, Madrid

## Teaching English to Speakers of Other Languages (TESOL) MA

**Duration:** 1 year FT / 2 years PT  
**Start:** September

## Teaching English to Speakers of Other Languages (TESOL) MA

**Duration:** 1 year FT  
**Start:** September

**ONLINE**

## Translation and Interpreting MA

**Duration:** 1 year FT / 2 years PT  
**Start:** September

*The University of Westminster is a Higher Education Language partner of the Chartered Institute of Linguists, member of the Institute of Translation and Interpreting, the Conférence Internationale permanente d'Instituts Universitaires de Traducteurs et Interprètes, the Association of Programmes in Translation and Interpreting Studies, UK and Ireland, Elia Exchange, and the UN MoU Network.*

Professional bodies accrediting or recognising our courses include:







# LAW

Our Law School offers a broad and innovative range of postgraduate courses. Embedded in practice, courses benefit from substantial input from professional experts and reflect the cutting-edge research led by the academic staff. You will develop original knowledge and skills which are relevant to a changing world, covering diverse areas of law, ranging from international commercial and corporate law to technology, international law and entertainment law.

Our academic staff are not only active researchers, passionate about their subject; they are also recognised experts, called upon to advise government bodies and courts on their specialist areas. You will be encouraged to become involved in our research activity as part of our vibrant postgraduate community.

Class sizes are kept relatively small to ensure that you have a first-class learning experience. The wide range of option modules offered on our courses allow you to tailor the course to reflect your interests and aspirations. You will also have the opportunity to participate in the student-led (pro bono) Legal Advice Clinic, and a variety of career and subject-specialist events throughout the year.

Graduates have gone on to have successful careers including as solicitors, barristers, family law mediators, and banking and finance lawyers for a variety of bodies including international organisations, government departments and NGOs.

**Campus for all courses:** Regent (Little Titchfield Street building)

**Corporate Finance Law LLM**  
Duration: 1 year FT / 2 years PT  
Start: September and January

**Entertainment Law LLM**  
Duration: 1 year FT / 2 years PT  
Start: September and January

**International and Commercial Dispute Resolution Law LLM**  
Duration: 1 year FT / 2 years PT  
Start: September and January

**International Commercial Law LLM**  
Duration: 1 year FT / 2 years PT  
Start: September and January

**International Law LLM**  
Duration: 1 year FT / 2 years PT  
Start: September and January

**Law and Technology LLM**  
Duration: 1 year FT / 2 years PT  
Start: September

**Legal Practice LLM / PGDip**  
Duration: 1 year FT / 2 years PT  
Start: September

*The LLM incorporates the Legal Practice Course and is accredited by the SRA. Students may also study for the Postgraduate Diploma which includes only the necessary LPC modules. The LPC remains a valid qualification route after SQE.*

**Professional Legal Practice LLM / PGDip**  
Duration: 1 year FT / 2 years PT  
Start: September

*This conversion course is designed for non-law graduates.*



# MARKETING

Businesses need people who can design and manage innovative marketing strategies. Our exciting and contemporary courses will prepare you for success in the marketing world, with the option to focus on digital marketing using our specialist facilities.

You might be looking to change career or want to specialise in the fast-changing areas of marketing and marketing communications. Whatever your interest, our programmes combine theory with practice in developing the attributes and specialist skills you need to confidently develop your career and respond to the changing business environment. Optional work-based learning modules are available on some programmes.

We have strong links with the Chartered Institute of Marketing (CIM), Institute of Data and Marketing (IDM) and the Institute of Practitioners in Advertising (IPA). This is reflected in the high level of guest speakers from industry who regularly contribute to our courses. Our dedicated, multicultural staff bring academic and real-world practitioner expertise to the learning experience and take a proactive approach to inclusivity, diversity and equality.

Our courses will prepare you for a wide variety of roles in business, such as account executive, brand manager, digital marketing executive, founder and CEO, and sales and marketing manager. Recent graduates have found employment in organisations including Adidas, Diageo, IMG Media, M&C Saatchi, McLaren Automotive, MediaCom and Unilever.

**Campus for all courses:** Marylebone

**Digital Marketing Management MSc**  
Duration: 1 year FT  
Start: September and January

*This course is accredited by the Institute of Data and Marketing and the Chartered Institute of Marketing with a Graduate Gateway programme status.*

**Marketing Communications MA / MSc**  
Duration: 1 year FT  
Start: September and January

*This course is accredited by the Institute of Data and Marketing. It prepares you to take the exam for the IPA Global Foundation Certificate. In addition, students gain membership of the Chartered Institute of Public Relations. This course is now also endorsed by the Chartered Institute of Marketing.*

**Marketing Management MA / MSc**  
Duration: 1 year FT  
Start: September and January  
*This course is accredited by the Chartered Institute of Marketing with a Graduate Gateway programme status.*

Professional bodies accrediting or recognising our courses include:







# MEDIA AND COMMUNICATION

Our courses lead the way in establishing new avenues of practice and interdisciplinary thought. With teaching by groundbreaking researchers and industry professionals, we will foster your capacity to develop creative media practices while deepening your understanding of the underpinning theory.

We will help you explore media and communication in the context of the individual, organisations and society. Taking an interdisciplinary approach, our courses tackle diverse issues ranging from communication policy, global media, development, social media and social change, right through to big data and applications of AI.

Many teaching staff are internationally renowned researchers and members of the University's Communication and Media Research Institute (CAMRI). CAMRI is one of the world's foremost research centres for media and communication studies.

Our graduates go on to succeed in a wide range of careers as journalists, media and digital media practitioners, campaign communicators, editors, academics and entrepreneurs.

**"The course was fascinating, inspiring, brilliantly practical and intellectually stimulating."**

**DAVID SMITH**  
Media, Campaigning and Social Change MA

**Communication MA**  
Duration: 1 year FT / 2 years PT  
Start: September  
Campus: Harrow

**Data, Culture and Society MA**  
Duration: 1 year FT / 2 years PT  
Start: September  
Campus: Cavendish / Harrow

**Digital Media: Storytelling and Production MA**  
Duration: 1 year FT  
Start: September  
Campus: Harrow

**Diversity and the Media MA**  
Duration: 1 year FT / 2 years PT  
Start: September  
Campus: Harrow

**Global Media MA**  
Duration: 1 year FT / 2 years PT  
Start: September  
Campus: Harrow

**Interactive Media Practice MA**  
Duration: 1 Year FT / 2 years PT  
Start: September  
Campus: Harrow

**International Media Business MA**  
Duration: 1 year FT  
Start: September  
Campus: Harrow

**Media and Development MA**  
Duration: 1 year FT / 2 years PT  
Start: September  
Campus: Harrow

**Media, Campaigning and Social Change MA**  
Duration: 1 year FT / 2 years PT  
Start: September  
Campus: Cavendish / Harrow

**Media Management MA**  
Duration: 1 year FT / 2 years PT  
Start: September  
Campus: Harrow

**Multimedia Journalism MA (Broadcast / Print and Online)**  
Duration: 1 year FT / 2 years PT  
Start: September  
Campus: Harrow  
*This course is accredited by the Broadcast Journalism Training Council.*

**Public Relations MA**  
Duration: 1 year FT / 2 years PT  
Start: September  
Campus: Harrow  
*The course is accredited by the Chartered Institute of Public Relations and the Public Relations Consultants Association.*

**Social Media and Digital Communication MA**  
Duration: 1 year FT / 2 years PT  
Start: September  
Campus: Harrow

Professional bodies accrediting or recognising our courses include:



For full and most up-to-date information, see our website: [westminster.ac.uk/media-and-communication](http://westminster.ac.uk/media-and-communication) or scan the QR Code



# MUSIC

Our music courses are established, internationally recognised and world leaders in their respective fields. We continue to develop generations of creative, responsive and critically agile music, audio and media professionals through our progressive approach to delivering these specialist subjects.

We are proud of the success of our graduates. The Audio Production course has produced BAFTA and Grammy Award winners, creative executives, educators, music and audio-visual producers, recording artists, and interactive and film sound designers. Graduates from this course work at the high end of the creative industry, at the BBC, Pinewood, Sony EA, Yamaha, Berklee, Disney, Paramount and Apple. Our Music Business Management graduates can be found working around the world at the cutting edge of new music enterprises such as iTunes, Spotify, Believe Digital, Shazam, Ticketmaster, Live Nation, and Kobalt Music, and in the global entertainment powerhouses of Universal Music Group, Sony Music Entertainment and Warner Music Group.

Our Live Music Management course is offered for those focused upon the live music and events industries. It will provide you with all the tools you need to navigate this fast-changing and challenging environment within London – the thriving hub for the UK's live music industry.

**Audio Production MA**  
Duration: 1 year FT / 2 years PT  
Start: September  
Campus: Harrow  
*This course is accredited by JAMES (Joint Audio Media Education Support).*

**Live Music Management MA**  
Duration: 1 year FT / 2 years PT  
Start: September  
Campus: Harrow

**Music Business Management MA**  
Duration: 1 year FT / 2 years PT  
Start: September  
Campus: Cavendish / Harrow

Professional bodies accrediting or recognising our courses include:



For full and most up-to-date information, see our website: [westminster.ac.uk/music](http://westminster.ac.uk/music) or scan the QR Code





# NUTRITION AND PUBLIC HEALTH

Our courses address nutritional and wellbeing issues across a wide range of people. This includes people with health issues relating to obesity and diet-related diseases, those in countries with issues relating to malnutrition and micronutrient deficiencies, and elite athletes requiring nutritional advice to optimise performance.

You will explore the evidence for the relationship between diet, physical activity and health, and the role that interventions can have in promoting health and treating disease. As a result, you will gain the specialist knowledge and practical skills you need to meet your future career challenges.

In the field of public health and wellbeing, we have an international reputation for innovative courses with a relevant and authentic response to the changing external context that we operate in. Our Integrative Health and Wellbeing MSc considers the changing health paradigm, both globally and in the UK, with a focus on individual and community wellbeing. Excitingly, this course is also being offered as a two-year route, one year of which is a work placement, enabling you to gain valuable experience in a health setting. Our Global Public Health with Data Science MSc brings together these key areas to support decision making, advance evidence-based policies and drive strategies in combating diseases by analysing omics, health, lifestyle and data.

Graduates in this field can expect to gain employment as nutrition advisers, dieticians, sports nutritionists, teachers or researchers.

**Campus for all courses:**  
Cavendish

**Global Public Health Nutrition MSc**  
Duration: 1 year FT / 2 years PT  
Start: September

*The course is accredited by the Association for Nutrition as part fulfilment of the requirements for registration as an associate Public Health Nutritionist.*

**Global Public Health with Data Science MSc**  
Duration: 1 year FT / 2 years PT  
Start: September

**“The best aspect of being part of the University is the support from the lecturers. They go above and beyond.”**

**BEN OFOSUHENEN**  
Global Public Health Nutrition MSc

*Professional bodies accrediting or recognising our courses include:*



**Integrative Health and Wellbeing MSc**  
Duration: 1 year FT  
Start: September

**Integrative Health and Wellbeing with Professional Experience MSc**  
Duration: 2 years FT  
Start: September

**Sport and Exercise Nutrition MSc**  
Duration: 1 year FT / 2 years PT  
Start: September  
*Accredited by the Association for Nutrition and the Sport and Exercise Nutrition register.*



# POLITICS AND INTERNATIONAL RELATIONS

Recognised for our expertise in this field, we are proud of our diverse student body, non-hierarchical culture and challenging, critical research. We are committed to enhancing your learning experience through both formal teaching and broader intellectual activities.

We have an international reputation for innovative research in politics and international relations, especially through our renowned Centre for the Study of Democracy. Our staff are active researchers bringing their knowledge and expertise into their teaching on our postgraduate courses, enabling you to engage with contemporary debates and issues at the highest level.

In addition to research-led teaching, we regularly invite external speakers to take part in our well-established series of seminars, public lectures and conferences. We also support an enhanced student experience through our pioneering Democratic Education Network.

Graduates work in a variety of roles, including as diplomats, journalists, policy analysts, civil servants, researchers and teachers.

**“It is great to engage with diplomats and senior policy practitioners as part of my course.”**

**JOANNA ENU OBENG**  
International Relations MA

**Campus for all courses:** Regent

**Diplomacy and Global Politics MA**  
Duration: 1 year FT / 2 years PT  
Start: September and January

**Global Development MA**  
Duration: 1 year FT / 2 years PT  
Start: September and January

**International Relations MA**  
Duration: 1 year FT / 2 years PT  
Start: September and January

**International Relations and Democratic Politics MA**  
Duration: 1 year FT / 2 years PT  
Start: September and January

**International Relations and Security MA**  
Duration: 1 year FT / 2 years PT  
Start: September and January





# PSYCHOLOGY

The University of Westminster has a strong reputation for postgraduate teaching in psychology. We offer exciting and distinctive courses in some of the most interesting areas of the subject. Our supportive, interactive learning environment equips you with theory and insights, as well as skills that can be applied in a professional setting.

Each course is developed and delivered by a team of enthusiastic, supportive psychologists who are all specialists in their fields. We believe strongly in maintaining close links between our teaching and research activities. You will be taught by active researchers, passionate about sharing their enthusiasm for their subject. Our vibrant research culture is distinctive for its openness, collaboration and interdisciplinary approach. We promote the interrelationship of research, enterprise, knowledge transfer and teaching activity.

Our Health Psychology MSc graduates have secured stage 2 training places to become Chartered Health Psychologists, while our Psychology MSc graduates have secured places on professional training courses that require Graduate Basis for Chartered Membership of the British Psychological Society.

Graduates from our psychology courses are well equipped for a variety of related roles, including counsellors, psychotherapists, health consultants, behavioural insights advisers, business and organisational psychologists, public health specialists and psychological wellbeing practitioners.

**Business and Organisational Psychology MSc**  
**Duration:** 1 year FT / 2 years PT  
**Start:** September  
**Campus:** Marylebone  
*This course is accredited by the Association for Business Psychology*

**Counselling PGDip**  
**Duration:** 2 year FT / 2 years PT  
**Start:** September  
**Campus:** Cavendish

**Health Psychology MSc**  
**Duration:** 1 year FT / 2 years PT  
**Start:** September  
**Campus:** Regent  
*This course is accredited by the British Psychological Society (BPS).*

**Psychology MSc**  
**Duration:** 1 year FT / 2 years PT  
**Start:** September  
**Campus:** Regent  
*This course is accredited by the British Psychological Society (BPS).*

**“I enjoy the group dynamic – everyone has their own perspective, which has made my learning so much richer.”**

**HESTER THOMPSON**  
**Psychology MSc**

Professional bodies accrediting or recognising our courses include:



For full and most up-to-date information, see our website:  
[westminster.ac.uk/psychology](http://westminster.ac.uk/psychology)  
 or scan the QR Code



# TOURISM AND EVENTS MANAGEMENT

With over 20 years of excellence in tourism and events teaching, we are evolving and enhancing our courses to recognise the important changes taking place in these exciting industries. This is especially reflected in our Event Design and Management MA, with its notable focus on the creative design and delivery of modern, engaging events.

The tourism industry has in recent years been one of the largest employers globally, and the events industry has seen significant growth in employment options over the past decade. As the global economy evolves post-pandemic, events and tourism are playing an increasingly important role in drawing visitors back to our cities.

At Westminster, we remain a leader in the delivery of quality tourism and event management courses. Our experienced academics and industry practitioners will help you explore the challenges and opportunities recent events have brought to the sector. And by studying in the heart of world events and one of the world's leading tourist destinations, you will develop the skills you need to manage tourism or staged events in other host destinations.

**Campus for all courses:**  
 Marylebone

**Event Design and Management MA**  
**Duration:** 1 year FT / 2 years PT  
**Start:** September

**Tourism Management MA**  
**Duration:** 1 year FT / 2 years PT  
**Start:** September  
*This course is accredited by the Tourism Management Institute.*

Professional bodies accrediting or recognising our courses include:



For full and most up-to-date information, see our website:  
[westminster.ac.uk/tourism-and-events-management](http://westminster.ac.uk/tourism-and-events-management)  
 or scan the QR Code





# TRANSPORT AND LOGISTICS

Recent world events have highlighted the critical importance of this discipline and its impact on life and society across the world. Highly regarded by students and employers in the UK and internationally, our courses equip you for professional life, planning and managing the future of our transport and logistics systems.

Course staff enjoy an international reputation, and our degrees are known for their combination of pure, practice-led and applied approaches. You will develop your own specialist expertise working collaboratively with students from across the globe.

Our freight transport and logistics research group explores sustainability and supply chains efficiency, while our award-winning air traffic management research team is recognised as a leader in Europe. Our active and sustainable travel research has won prizes for its outstanding impact on public policy, and we have a new Active Travel Academy linked to the transport planning courses.

Graduates have gone on to enjoy a range of careers in sectors including logistics management, supply chain analysis, transport planning and operations management, as well as in a variety of public and private sector organisations and consultancies.

**Campus for all courses:**  
Marylebone

**Air Transport Planning and Management MSc**  
**Duration:** 1 year FT / 2 years via block release  
**Start:** September and January

**Logistics and Supply Chain Management MSc**  
**Duration:** 1 year FT / 2 years PT  
**Start:** September  
*This course is accredited by the Chartered Institute of Logistics and Transport.*

**Transport Planning and Management MSc**  
**Duration:** 1 year FT / 2 years PT  
**Start:** September  
*This course will give you full exemption from the examination requirement for membership of the Chartered Institute of Logistics and Transport, and also forms part of the pathway to the Transport Planning Professional qualification.*

Professional bodies accrediting or recognising our courses include:



# ESSENTIAL INFORMATION



# ESSENTIAL INFORMATION

## APPLYING TO STUDY AT WESTMINSTER

### Taught Masters

The University of Westminster accepts applications online. To apply, please visit [westminster.ac.uk/postgraduate-courses](https://www.westminster.ac.uk/postgraduate-courses), select the course that you wish to apply for and click the 'Apply' button, where you will be able to submit your application directly to us.

### Research degrees

Separate application and admissions procedures apply for MPhil/PhD research degrees. For more information on our research degrees, please visit [westminster.ac.uk/research-degrees](https://www.westminster.ac.uk/research-degrees)

Most of our postgraduate courses starting in September and January have a deadline for applications. We advise you to apply as soon as you can as there is a high demand for some courses. To guarantee you have adequate time to complete the process, we recommend you apply early if you need to apply for a visa to study in the UK, or if your course requires a portfolio or essay component or interview, as this selection process can take longer.

If you are applying for a scholarship, you should also ensure that your application is submitted as early as possible. If you would like to apply for a scholarship on a PhD course, you can find information at [westminster.ac.uk/graduate-school](https://www.westminster.ac.uk/graduate-school)

Details on specific application deadlines are available on our website.

If you require additional guidance, you can contact our Course Enquiries Team:

T: +44 (0)20 7911 5000 ext 65511

E: [course-enquiries@westminster.ac.uk](mailto:course-enquiries@westminster.ac.uk)

### Entry requirements

Specific entry requirements for courses are given on each course page of our website.

Please visit individual course pages for more details and specific language requirements: [westminster.ac.uk/english-language-requirements](https://www.westminster.ac.uk/english-language-requirements)

If your degree (or equivalent qualification) is from outside the UK, please visit [westminster.ac.uk/international](https://www.westminster.ac.uk/international) for information on our requirements from your country.

### Gaining credit for what you have learnt

Your previous study or experience – whether through paid work or in a voluntary capacity – may mean you can gain exemption from some modules. Recognition of Prior Certificated Learning (RPCL) can be gained based on previous study that has led to a formal certificated qualification and this may include work-based experience (CPD).

Recognition of Prior Experiential Learning (RPEL) recognises knowledge or skills acquired through life or work experience, which have not been formally recognised by an academic or professional certification.

You can make a claim if you think you may be eligible by visiting [westminster.ac.uk/rpcl](https://www.westminster.ac.uk/rpcl)

The process is rigorous and credits will only be awarded for learning that is current and that relates to the aims and content of your intended course.

## ENGLISH LANGUAGE DEVELOPMENT

We offer a number of pre-session English and in-session academic English programmes.

### Pre-session English

If you are an international student, you can register on one of our pre-session English language courses. These will help you develop the language and study skills you need for academic success on a postgraduate course.

Our pre-session English courses will enable you to develop the language and study skills necessary to meet the demands of your academic course in an independent and responsible manner. You will also experience student life through our social and welcome programmes. Our aim is to provide you with a solid foundation for when you start your postgraduate course, and to give you the skills, knowledge and experience to make the most of your time at university. The course materials and assessments will also have a disciplinary focus, as a further means of preparing you for your future degree. You will be assessed by a combination of coursework and exams.

As a pre-session student, you will also be expected to do homework, which will lead to formal assessments at the end of the course. In addition, you will have access to our extensive facilities and virtual services, including libraries.

You can find more information at [westminster.ac.uk/pre-sessional](https://www.westminster.ac.uk/pre-sessional)

### Academic English

Our academic English modules have been designed to allow you to consolidate, extend and develop your proficiency in academic English. During orientation week, members of the academic English team will give a short presentation to explain the importance of academic English and the rationale for the modules we offer.

Enrolment for academic English will take place during orientation week and learning will begin in week one. During enrolment we can determine whether an academic English module is appropriate for you.

You can find more information at [westminster.ac.uk/academic-english](https://www.westminster.ac.uk/academic-english)

## ACCOMMODATION

### Student accommodation

Whether you decide to live in our halls of residence or in private housing, we can help you find the right accommodation. For more information, visit [westminster.ac.uk/accommodation](https://www.westminster.ac.uk/accommodation)

### Halls of residence

Full-time postgraduate students can apply to live at our central London halls or Harrow Hall. The majority of rooms available are single study bedrooms with shared kitchens. These halls are easily reached if

studying in London with a maximum of five Tube stops from any one of our campuses. The convenient locations are great for exploring London, with prices inclusive of all utilities.

### Private accommodation

You might prefer to live in private accommodation. There is a supply of rented housing in central London at a wide range of prices. The rent will depend on where you live and the type of accommodation. For example, some students choose to take a room in a shared flat or house. Please remember to take into account the cost of commuting as you consider where to live. We offer students comprehensive advice on finding suitable private accommodation.

Find information on housing and tips on successful accommodation hunting at [westminster.ac.uk/accommodation](https://www.westminster.ac.uk/accommodation)

## VISAS

The type of visa you will need, and the process for applying for it, will differ based on the type of course you plan to study, the length of your course and several other criteria. For more information visit [westminster.ac.uk/international/visas-and-advice/visas](https://www.westminster.ac.uk/international/visas-and-advice/visas)

## FEES

To find the current fee level for your course, visit [westminster.ac.uk/fees-and-funding](https://www.westminster.ac.uk/fees-and-funding)

## NOTES FOR APPLICANTS

Our advertised course offering is correct as described at the time of going to press. Please check our website for the most up-to-date list of available courses. Changes to the advertised course information may be made to make sure our courses are kept up to date. Should any major change be necessary, applicants will be notified as soon as possible. Some option modules might not run if a minimum number of students is not reached. There is no guarantee that courses that are undergoing validation will be approved. For more information, visit [westminster.ac.uk/terms-and-conditions](https://www.westminster.ac.uk/terms-and-conditions)

Some modules, internships or work placements may also be impacted by restrictions and/or government regulations.



# INDEX

<b>A</b>		Diversity and the Media MA.....	53
Academic English courses.....	62	Doctoral Researcher Development Programme.....	28
Accommodation for students.....	24, 62	<b>E</b>	
Accounting and Finance courses.....	34	Economic Policy and Analysis MSc.....	45
Air Transport Planning and Management MSc.....	59	English and Creative Writing courses.....	46
Alumni.....	24	Energy and Environmental Design Postgraduate Certificate.....	36
Applied Biotechnology MSc.....	39	English Language and Linguistics MA.....	46
Applying to Westminster.....	61	English Language and Literature MA.....	46
Architecture and Environmental Design MSc.....	36	English language development.....	26, 61
Architecture and Environmental Design Postgraduate Certificate.....	36	English Literature: Modern and Contemporary Fictions MA.....	46
Architecture, Interiors and Urban Design courses.....	36	Entertainment Law LLM.....	51
Architecture MA.....	36	Entrepreneurship, Innovation and Enterprise Development MSc.....	40
Architecture Postgraduate Diploma Professional Practice (RIBA pt III).....	36	Entry requirements.....	61
Art, Design and Visual Culture courses.....	38	Event Design and Management MA.....	58
Art and Visual Culture MA.....	38	<b>F</b>	
Audio Production MA.....	54	Facilities.....	9-10
<b>B</b>		Fashion Business Management MA.....	47
Big Data Technologies MSc.....	44	Fashion courses.....	47
Biological and Biomedical Sciences courses.....	39	Fees.....	62
Biomedical Sciences MSc.....	39	Film and Television courses.....	49
Business and Management courses.....	40	Film, Television and Moving Image MA.....	49
Business and Organisational Psychology MSc.....	40, 57	Finance (Banking / International Finance) MSc.....	34
Business of Film MA.....	49	Finance and Accounting MSc.....	34
<b>C</b>		FinTech with Business Analytics MSc.....	34
Careers and Employability Service.....	16, 23	Financial Support.....	31
Campus.....	9-10, 65	<b>G</b>	
Communication MA.....	53	Global Criminology MA.....	43
Computer Science and Engineering courses.....	41	Global Development MA.....	56
Construction Project Management MSc.....	42	Global Media MA.....	53
Construction, Surveying and Real Estate courses.....	42	Global Public Health Nutrition MSc.....	55
Corporate Finance Law LLM.....	51	Global Public Health with Data Science MSc.....	55
Counselling PGDip.....	57	<b>H</b>	
Course enquiries.....	61, 66	Halls of residence.....	62
Course structure.....	19	Health Psychology MSc.....	57
Creative Practice MRes.....	38	Human Resource Management MA.....	40
Creative Writing: Writing the City MA.....	46	<b>I</b>	
Criminology course.....	43	Integrative Health and Wellbeing MSc.....	55
Cultural and Critical Studies MA.....	46	Integrative Health and Wellbeing with Professional Experience MSc.....	55
Cyber Security and Forensics MSc.....	41	Interactive Media Practice MA.....	38, 53
<b>D</b>		Interior Architecture MA.....	36
Data, Culture and Society MA.....	53	International and Commercial Dispute Resolution Law LLM.....	51
Data Science and Analytics MSc.....	44	International Business and Management MSc / MA.....	40
Data Science and Informatics courses.....	44	International Commercial Law LLM.....	51
Digital Business MSc.....	40	International Development Management MSc.....	40
Digital Marketing Management MSc.....	52	International Human Resource Management MA.....	40
Digital Media: Storytelling and Production MA.....	53	International Law LLM.....	51
Diplomacy and Global Politics MA.....	56		
Disability support.....	23		

International Communication: Liaison and Advocacy MA.....	50
International Media Business MA.....	53
International Planning and Sustainable Development MA (with pathways).....	36
International Relations and Democratic Politics MA.....	56
International Relations and Security MA.....	56
International Relations MA.....	56
International student support.....	25-26
Investment and Risk Finance MSc.....	34

<b>L</b>	
Language courses.....	50
Law courses.....	51
Law and Technology LLM.....	51
Learning support.....	23
Legal Practice LLM / PGDip.....	51
Libraries and study spaces.....	11-12
Live Music Management MA.....	54
Logistics and Supply Chain Management MSc.....	59
London life.....	5-8

<b>M</b>	
Management MA.....	40
Map.....	65
Marketing Communications MA / MSc.....	52
Marketing courses.....	52
Marketing Management MA / MSc.....	52
Master of Architecture (MArch) (RIBA pt II).....	36
Master of Business Administration (MBA).....	40
Media and Communication courses.....	53
Media and Development MA.....	53
Media Management MA.....	53
Media, Campaigning and Social Change MA.....	53
Menswear MA.....	47
Menswear with Professional Experience MFA.....	47
Mentoring scheme.....	16
Multimedia Journalism MA (Broadcast / Print and Online).....	53
Museums, Galleries and Contemporary Culture MA.....	38
Museums, Galleries and Contemporary Culture with Professional Experience.....	38
Music Business Management MA.....	54
Music courses.....	54

<b>N</b>	
Nutrition and Public Health courses.....	55

<b>O</b>	
Online courses.....	19, 40, 46

<b>P</b>	
PhD research degrees.....	28
Planning and Urban Design courses.....	36
Politics and International Relations courses.....	56
Postgraduate loans.....	31
Pre-Masters courses.....	26
Pre-sessional English courses.....	25, 61
Private Accommodation.....	62
Professional Legal Practice LLM / PGDip.....	51
Professional Writing MA.....	46
Professional Writing with Extended Work Placement MA.....	46
Project Management MSc.....	40
Psychology courses.....	57

Psychology MSc.....	57
Public Relations MA.....	53

<b>R</b>	
Real Estate Development MSc.....	42
Recognition of Prior Certificated Learning (RPCL).....	61
Research.....	27
Research degrees.....	28, 61

<b>S</b>	
Scholarships.....	31
Social Media and Digital Communication MA.....	53
Software Engineering (Conversion) MSc.....	41
Specialised Translation MA.....	50
Sport and Exercise Nutrition MSc.....	55
Study Abroad Programme.....	26
Support Services.....	23
Sustainability Management and Innovation MSc.....	40

<b>T</b>	
Teaching English to Speakers of Other Languages (TESOL) MA.....	46, 50
Terms and conditions.....	62
Tourism and Events Management courses.....	58
Tourism Management MA.....	58
Translation and Interpreting courses.....	50
Translation and Interpreting MA.....	50
Transport and Logistics courses.....	59
Transport Planning and Management MSc.....	59

<b>U</b>	
Urban and Regional Planning MA.....	36
Urban Design courses.....	36

<b>W</b>	
Wellbeing and health services.....	24
Working with our business community.....	21-22

Photography by Simon Armstrong, George Baggaley, Andrea Baldradi Photography, Chamitha Bandara, Darren Brade, Claudia Cantarini, Matt Clayton, Nick Daly, Sara Dominici, Siobhan Doran, Wren Fegarsky, David Freeman, Nina Hollington, Rory Lindsay, Michael Maziere, Joanne O'Brien, Kacper Rudolf, Paulina Todorova and Nick Turpin. Many thanks to all the students, alumni and staff who helped to produce this publication.

Produced by the University of Westminster.  
Printed by Belmont Press Ltd.

Published in August 2023. Information correct at the time of printing. For up-to-date information please check website.



Once you have finished with this prospectus please recycle it.

A charity and a company limited by guarantee.  
Registered office: 309 Regent Street, London W1B 2UW  
Registration number: 977818  
9877/04.23/CH/BP



# FINDING OUR CAMPUSES



## VISIT US

To find out more about our courses, career opportunities and to meet the course team, visit us either online or in person.

## OPEN DAYS AND EVENINGS

For the latest information on open days, visit: [westminster.ac.uk/open-days](http://westminster.ac.uk/open-days)

## WE'RE HERE TO HELP

Our Course Enquiries Team provides information and advice on a range of issues, including:

- course information
- entry requirements for UK and international students
- the application process
- postgraduate open events
- tuition fees and payments

Chat to our Course Enquiries Team via our live chat: [westminster.ac.uk/study](http://westminster.ac.uk/study)

E: [course-enquiries@westminster.ac.uk](mailto:course-enquiries@westminster.ac.uk)

T: +44 (0) 20 7911 5000 ext 65511





**westminster.ac.uk**

 uniofwestminster  uniwestminster

 uniofwestminster  uniwestminster

 University of Westminster

**CHINA**

[westminsteruniversity.cn](http://westminsteruniversity.cn)

 westminsteruni  westminsterchina

**SOUTH ASIA**

 University of Westminster: South Asia

**COURSE ENQUIRIES**

T: +44 (0)20 7911 5000 ext 65511

E: [course-enquiries@westminster.ac.uk](mailto:course-enquiries@westminster.ac.uk)



**WESTMINSTER  
BUSINESS  
SCHOOL**

